



Herald

BETHEL LUTHERAN CHURCH

Volume 90

Number 2

February 2026

PASTOR'S Ponderings

HELLO CHILDREN OF GOD,

I am writing this on Friday, January 17, in the afternoon. Today was an amazing day of volunteers, food delivery, and continued Amazon packages coming in for our Little Free Pantry. Let me tell you what is happening in your church building.

Our social media presence is now worldwide, thanks to Regan and her incredible presence and attention to detail. Regan made an appeal on our social media apps for more food for our Little Free Pantry, and let people know we have a wish list on Amazon which you can find through our website. Friends, no less than 600 packages of food have been delivered to Bethel in the past 5 days! 90% by Amazon, with the rest being dropped off by neighbors. The support and response is amazing and humbling.

We said we were out of whistles for people who wanted them. No less than 1000 whistles were sent to Bethel through Amazon. Today, 20 people put whistle packets together and we are distributing them as quickly as we are able.

With all the groceries that have arrived, a small group of volunteers put together 43 sets of groceries to be delivered to the members of our Hispanic congregations (with their permission). These were delivered by neighborhood volunteers. Our kitchen, back room in the kitchen, and storage under the stage are organized by kinds of donations, and

as I write, there are 37 more boxes of food sitting in our entryway on 17th.

The Bancroft Neighborhood Signal group (concerned volunteers peacefully doing all they can to protect our immigrant neighbors and their children) are meeting at Bethel, standing watch at Bethel, and relying on Bethel to be a hub of justice and peace! These folks are dedicated and standing watch at all schools and day care centers everyday, informing staff members if any federal agents are coming to their building.

Regan and I are watching our social media to delete any hateful and disrespectful responses, as well as thanking folks for their positive responses and assistance in working towards peace. We are also respectfully engaging with those who are respectful to us, but may disagree with us.

Friends, I have no idea what the state of our State will be by the time you read this, but I want you to know that the work of feeding the hungry, working for justice, building beloved community, and loving our neighbors is rampant on 17th Avenue South these days! I hope you have found ways to do the same and/or joined us in action and prayers.

In your, for Jesus,



Pastor Brenda

BOARD OF ADMINISTRATORS

GREETINGS FROM YOUR BOARD OF ADMINISTRATORS!

The board met in mid-January, in the midst of mourning and present danger in our community. We also, while meeting, were in the midst of good works: Boxes upon boxes of groceries — donated and being delivered to families in need; Neighbors upon groups of neighbors —gathering to keep each other safe.

January is still the beginning of a new year for our church, including for the budget. We discussed the projected deficit for the end of 2025, the additional expenses related to the roof repairs, and the budget for 2026; please look for more information to come as we prepare for our annual meeting on March 1.

We discussed opportunities to respond to evolving needs in our communities, including opportunities to support the congregations and organizations who share

our space, and to keep our parking lot and building more secure.

After our meeting, we also convened electronically to approve submitting an Imagination Grant application for work with other small churches in our area, and to support the expansion of the CANMN space in our building.

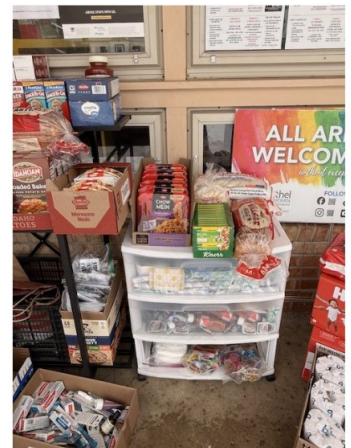
I'm grateful for all of you and the gifts of time, talent, and care that you share with Bethel and with our broader community.

In hope and service,
Sarah Berke

President
On behalf of the Board of Administrators

Thank you

Thank you to all of the volunteers who have helped us maintain our Little Free Pantry by organizing, unpacking, and distributing food to those in need. And a huge thank you to everyone for your donations!



BERNIE'S MUSIC UPDATE

In February we continue celebrating Christ's light in our world during Epiphany. On Ash Wednesday, February 18, we begin the 40 days of Lent, observing Jesus' journey through trials of authorities and empire, and prepare for his death and incredible resurrection on Easter Sunday in March. We will "bury the Alleluias" and praise God in more contemplative tones until we sing them again loudly in celebration of Christ's resurrection.

We ask Jesus to accompany us in our trials during the dark, but gradually lightening winter, with Spirituals like "I Want Jesus to Walk With Me," and "Wade in the Water." These mark the sacrifices of our African-American siblings during slavery and segregation. We sing them as we continue the struggle for justice and civil rights for the brown, black, LGBTQIA+, and other disenfranchised members of our community suffering under today's empire.

In January I sang in a walking vigil in South Minneapolis with Singing Resistance, a growing organization of people singing songs of comfort and support for our neighbors

most affected by I.C.E. raids, and the threats of unlawful detention and violence. You can find more information about Singing Resistance on Instagram, and contact me if you are interested in singing.

At this month's 2nd Saturday Concert, the Seward Concert Band of South Minneapolis will return. They are sure to play a lively concert as they did in 2024, and they include members from the Bethel community and our neighborhood. Please join us at 3:00 pm on February 14th for wonderful music, treats, and conversation following the concert.

Bethel Choir and Handbell Choir will sing and play in worship this month. We have openings in both ensembles, and *you are welcome to try us out*. If you or someone you know have questions, please contact me. Handbell Choir rehearses Mondays, and Bethel Choir rehearses Wednesdays, both at 7 pm.



Yours in Faith and Music,

Bernie Asher

music2023@bethel-mpls.org

BETHEL LUTHERAN CHURCH'S
2ND SATURDAY

CONCERT SERIES

Join us at 3pm every 2nd Saturday
November 2025 - March 2026
for an afternoon of beautiful music.

Suggested \$10 Donation.

BETHEL LUTHERAN CHURCH
4120 17th Ave. S.
Minneapolis, MN | bethel-mpls.org



ALL ARE WELCOME

without exception!



ELLIE'S GRANTS UPDATE

HELLO FRIENDS,

At the time of writing this, it's mid-January. I hope that things will be different by the time you all read this, but for now, I'll admit that it's hard to find anything sufficient to write. I feel for and fear for all of our neighbors who are being targeted by ICE, and I want to recognize the general feeling of unrest in South Mpls over the past few weeks. If you feel tired, or are having trouble focusing, or are doing the best you can to hold things together on the outside—I'm right there with you. Let's take a deep breath.

I admire all of you doing what you can to help out our neighbors. If you feel unsure of your role in all of this, I encourage you to take a moment to think about your skills and roles you already have in your community. If you can't protest or volunteer your time as an observer, there are other ways you can help. We need folks packing and delivering groceries, people providing legal and financial aid, people babysitting their neighbors' kids or shoveling their neighbors' driveways; we need people donating funds where they can; we need artists.

As your grant manager, I'm pleased to report that we've been receiving record donations towards our Little Free

Pantry. Especially now, we need help organizing and delivering the donations we've received to people at home who need them. Please reach out to bethel@mpls.org if you are able to help, or if you are interested in other volunteer opportunities in the near future. In general, I would recommend checking out standwithminnesota.com for a neatly compiled list of mutual aid funds, crowdfunding, organizations seeking volunteers or donations, and more. If nothing else, even just sharing this information with a friend makes a huge difference.

I hope that February is kinder to us, and I know we have a lot of good things coming due to the huge efforts of Bethel staff and members of the congregation such as yourself. (Now is as good a time as any to remind you that we have many projects in mind for 2026 in need of funding through Thrivent Action Team Grants. Shoot me an email to learn more). For the time being, let's keep being good neighbors and good helpers, and I'm honored to be in community with you all.



Hang in there.

Warmly,
Ellie Erb

Bethel Grant Manager

FEASIBILITY UPDATE

Now that the holidays are over we are working on reconnecting with some previous contacts with whom we have previously had promising conversations about the use of our building. No clear answer is out there yet, but we are determined to try to make 2026 the year we find a solution to our needs. We also continue to learn more about our contracts regarding the monopoly and how they may affect any future decisions.

If you have questions or ideas for us, please get in touch.

Thank you,
*Laurie Hauge, Ann Allison, Gene Rodi,
Don Olson, Pastor Brenda, and Jim
Lair, Chair*

feasibility@bethel-mpls.org

A blue rectangular graphic with white stars of various sizes scattered throughout. The text is centered and reads: "SAVE the DATE" in large, bold, white letters. Below that, "Bethel's Annual Meeting" is written in a smaller, bold, white font. Underneath, "Sunday, March 1, 2026" is written in a bold, white font. At the bottom, "after worship" is written in a white, cursive script font.

SAVE
the
DATE

Bethel's Annual Meeting
Sunday, March 1, 2026
after worship



Easter

AT BETHEL

EASTER BREAKFAST

Sunday, April 5 at 9am

Please RSVP to reserve your spot:

bethel@bethel-mpls.org

(612) 724-3693

or complete

the form here:



EASTER SERVICE

Sunday, April 5 at 10am

EASTER EGG HUNT

Saturday, April 4 at 10am

Join us at Bethel for an Easter Egg Hunt!

Kids up to 5th grade are welcome to join.

Lent

WITH BETHEL

Joint services with St. Peder's and BOLD

ASH WEDNESDAY

Wednesday, February 18 at 7pm

At Bethel

PALM SUNDAY

Sunday, March 29 at 10am at Bethel

MAUNDY THURSDAY

Thursday, April 2 at 6:30pm

*We will worship at St. Peder's
4600 E 42nd Street, Minneapolis.*

SOUP AND WORSHIP WEDNESDAYS

February 25 and March 4, 11, 18, 25

5:30pm Soup | 6:15pm Worship

At Bethel

GOOD FRIDAY

Friday, April 3 at 7:00pm

We will have a Service of Darkness at Bethel.



BETHEL LUTHERAN CHURCH | 4120 17th Ave. S., Minneapolis, MN | bethel-mpls.org

MINISTRY CALENDAR

Sunday	Monday	Tuesday	Wednesday
<p>1</p> <p>10:00am Bethel Worship 10:15am Sunday School 11:00am Fellowship Time 1:00pm Pentecostal Casa Worship 5:30pm Minneapolis Jo 7:00pm El Nuevo Despertar AA</p>	<p>2</p> <p>Bethel Office Closed 9:45am Community Ed Watercolour Class 10:00am CANMN Intake 7:00pm Bell Choir 7:00pm Bridge to Shore AA 7:00pm El Nuevo Despertar AA</p>	<p>3</p> <p>7:00am AA Meditation 9:30am NHS Coffee Time and Cribbage 9:30am OA HOW Meeting 9:30am The Curiosity Crew School 10:00am NHS Exercise 10:00am Staff Meeting 2:00pm NHS counseling 5:30pm Minneapolis Jo 6:00pm Luz Alas Naciones 6:30pm Scout Troop 38 7:00pm El Nuevo Despertar AA 7:00pm Pentecostal Casa Music</p>	<p>4</p> <p>9:30am Ensemble Music 10:00am NHS Women's Art G 10:00am NHS Yoga 12:00pm Hybrid Bible Study 1:00pm NHS counseling 6:00pm Luz Alas Naciones 6:30pm Continuous Action A 7:00pm Bethel Choir 7:00pm El Nuevo Despertar A</p>
<p>8</p> <p>Bethel Choir Sings 10:00am Bethel Worship 10:15am Sunday School 11:00am Fellowship Time 1:00pm Casa De Oracion Fellowship 1:00pm Pentecostal Casa Worship 5:30pm Minneapolis Jo 7:00pm El Nuevo Despertar AA</p>	<p>9</p> <p>Bethel Office Closed 8:30am Waxing -- Sliding Door Entrance Closed until 3:30pm 6:00pm Girl Scout Troop 18896 7:00pm Bell Choir 7:00pm Bridge to Shore AA 7:00pm El Nuevo Despertar AA 7:00pm Troop 38 Committee Meeting 8:00pm Bridge to Shore AA - Meeting</p>	<p>10</p> <p>7:00am AA Meditation 9:30am Dean Billmeyer Organ Rehearsal 9:30am NHS Coffee Time and Cribbage 9:30am OA HOW Meeting 9:30am Operation Love Quilters 9:30am The Curiosity Crew School 10:00am NHS Exercise 10:00am Staff Meeting 1:00pm NHS Grief Support Group 5:30pm Minneapolis Jo 6:00pm Luz Alas Naciones 6:30pm Scout Troop 38 7:00pm El Nuevo Despertar AA 7:00pm Pentecostal Casa Music</p>	<p>11</p> <p>9:30am Ensemble Music 10:00am NHS Women's Art G 10:00am NHS Yoga 12:00pm Hybrid Bible Study 2:00pm NHS Counseling 6:00pm Luz Alas Naciones 6:30pm Continuous Action A 7:00pm El Nuevo Despertar A</p>
<p>15</p> <p>10:00am Breakfast and Comedy Worship in the Gym 10:15am Sunday School 11:00am Fellowship Time 1:00pm Pentecostal Casa Worship 5:30pm Minneapolis Jo 7:00pm El Nuevo Despertar AA</p>	<p>16</p> <p>Bethel Office Closed 10:00am CANMN Intake 7:00pm Bridge to Shore AA 7:00pm El Nuevo Despertar AA</p>	<p>17</p> <p>7:00am AA Meditation 9:30am Dean Billmeyer Organ Rehearsal 9:30am NHS Coffee Time and Cribbage 9:30am OA HOW Meeting 9:30am The Curiosity Crew School 10:00am NHS Exercise 10:00am Staff Meeting 4:00pm NHS Board Meeting 5:30pm Minneapolis Jo - Dave Cross 6:00pm Luz Alas Naciones 6:30pm Mission Council 6:30pm Scout Troop 38 7:00pm El Nuevo Despertar AA 7:00pm Pentecostal Casa Music</p>	<p>18</p> <p>Bethel Choir Sings Handbell Choir plays 9:30am Dean Billmeyer Organ 9:30am Ensemble Music 10:00am NHS Women's Art G 10:00am NHS Yoga 12:00pm Hybrid Bible Study 6:00pm Luz Alas Naciones 6:30pm Continuous Action A 6:30pm Minnesota Nature PH 7:00pm Ash Wednesday Wo 7:00pm El Nuevo Despertar A 7:30pm Continuous Action Le</p>
<p>22</p> <p>10:00am Bethel Worship 10:15am Sunday School 11:00am Fellowship Time 1:00pm Casa De Oracion Fellowship 1:00pm Pentecostal Casa Worship 5:30pm Minneapolis Jo 7:00pm A Holy Experiment 7:00pm El Nuevo Despertar AA</p>	<p>23</p> <p>Bethel Office Closed 8:30am Waxing -- Office Hallway 2:30pm Feasibility Study Team 6:00pm Girl Scout Troop 18896 7:00pm Bridge to Shore AA 7:00pm El Nuevo Despertar AA</p>	<p>24</p> <p>7:00am AA Meditation 9:30am NHS Coffee Time and Cribbage 9:30am OA HOW Meeting 9:30am The Curiosity Crew School 10:00am NHS Exercise 10:00am Staff Meeting 5:30pm Minneapolis Jo - Dave Cross 6:00pm Luz Alas Naciones 6:30pm Scout Troop 38 7:00pm El Nuevo Despertar AA 7:00pm Pentecostal Casa Music</p>	<p>25</p> <p>9:30am Ensemble Music 10:00am NHS Women's Art G 10:00am NHS Yoga 12:00pm Hybrid Bible Study 5:30pm Lent Supper and Wo 6:00pm Luz Alas Naciones 6:30pm Continuous Action A 7:00pm El Nuevo Despertar A 7:15pm Bethel Choir</p>

R — FEBRUARY 2026

Day	Thursday	Friday	Saturday
Group A AA	<p>5</p> <p>9:00am HEDFEX School 9:00am NHS Foot Care 9:30am NHS Nurse Is In/Blood Pressure 10:00am NHS Exercise 11:00am NHS Senior Discussion Group 5:00pm CANMN Distribution 6:00pm BNA Board Meeting 7:00pm El Nuevo Despertar AA 7:00pm Up the Creek AA 8:00pm Up the Creek AA Meeting</p>	<p>6</p> <p>8:30am 17th Ave Entrance Closed 9:30am Dean Billmeyer Organ Rehearsal 9:30am Ensemble Music 6:00pm Pentecostal Casa Worship 7:00pm El Nuevo Despertar AA</p>	<p>7</p> <p>8:30am Pack 38 Meeting 9:00am AA Amigos 11:00am CANMN Deliveries 6:00pm Luz Alas Naciones 7:00pm El Nuevo Despertar AA</p>
Group A AA	<p>12</p> <p>9:00am HEDFEX School 9:30am NHS Nurse Is In/Blood Pressure 10:00am NHS Exercise 11:15am NHS Lunch and Movie 5:00pm CANMN Distribution 5:30pm Community Fun Night 7:00pm El Nuevo Despertar AA 7:00pm Up the Creek AA</p> <p></p>	<p>13</p> <p>8:30am Waxing -- 17th Ave Entrance Stairs Closed until 3:30pm 9:30am Ensemble Music 6:00pm Pentecostal Casa Worship 7:00pm El Nuevo Despertar AA</p>	<p>14</p> <p>9:00am AA Amigos 11:00am CANMN Deliveries 12:00pm 2nd Saturday Concert Setup and Rehearsal 3:00pm 2nd Saturday Concert 6:00pm Luz Alas Naciones 7:00pm El Nuevo Despertar AA</p> <p></p>
Rehearsal Group A Photo Club Worship AA Leadership Meeting	<p>19</p> <p>9:00am HEDFEX School 9:30am Dean Billmeyer Organ Rehearsal 9:30am NHS Nurse Is In/Blood Pressure 10:00am Building and Grounds Meeting 10:00am NHS Exercise 11:00am NHS Support As We Age 12:00pm NHS - Caregiver Happy Hour 5:00pm CANMN Distribution 7:00pm Board of Administrators 7:00pm El Nuevo Despertar AA 7:00pm Up the Creek AA</p> <p>Herald Deadline 12:00pm</p>	<p>20</p> <p>8:30am Waxing -- Rooms 9/10 9:30am Ensemble Music 6:00pm Pentecostal Casa Worship 7:00pm El Nuevo Despertar AA</p>	<p>21</p> <p>8:30am Pack 38 Car Cut Day 9:00am AA Amigos 11:00am CANMN Deliveries 6:00pm Luz Alas Naciones 7:00pm El Nuevo Despertar AA</p>
Group Worship A AA	<p>26</p> <p>9:00am HEDFEX School 9:30am NHS Nurse Is In/Blood Pressure 10:00am NHS Exercise 11:00am NHS Community Connection 12:10pm HEDFEX School Gym Time 12:30pm NHS Diabetes Support Group 5:00pm CANMN Distribution 7:00pm El Nuevo Despertar AA 7:00pm Up the Creek AA</p>	<p>27</p> <p>9:30am Ensemble Music 5:00pm Mutokai -- Minneapolis Jo Seminar 6:00pm Pentecostal Casa Worship 7:00pm El Nuevo Despertar AA</p>	<p>28</p> <p>9:00am AA Amigos 9:00am Mutokai -- Minneapolis Jo Seminar 11:00am CANMN Deliveries 6:00pm Luz Alas Naciones 7:00pm El Nuevo Despertar AA</p>

BIBLE STUDY WITH PR BRENDA

Wednesdays at 12pm

Online meeting room:

<https://us02web.zoom.us/j/81542792093>



And in-person in the Fireside Room.

2/4	Psalm 34:1-10 Matthew 11:28-30
2/11	Matthew 17:1-9 Exodus 24:12-18
2/18	Matthew 4:1-11 Psalm 32
2/25	John 3:1-17 Psalm 121

CHURCH STAFF AND LEADERSHIP

Rev. Brenda Froisland, Pastor:

pastor@bethel-mpls.org

Operations Manager:

Regan Saunders

bethel@bethel-mpls.org

Music:

Bernie Asher, Music Director

music2023@bethel-mpls.org

Anne Phillips, Musician

musician2023@bethel-mpls.org

Office Manager:

Margaret Borg

office@bethel-mpls.org

Building Facilitator:

Kristian Ask

building@bethel-mpls.org

Assistant Custodians:

Michael Hauge, Kingston Normil

Jaden Watson, Josh Weber

and Franklin Wohnoutka

Grant Manager:

Ellie Erb

grantmanager@bethel-mpls.org

Finance Coordinator:

Teresa O'Brien

assttreas@bethel-mpls.org

Visitation Minister:

Susan Johnson

visitation@bethel-mpls.org

For a full list of our staff and leadership members, please visit our website:



SUNDAY SERVERS

Date	Assisting Minister	Lector	Cantor	Sacristy	Ushers	Streaming	Hospitality	Altar Guild
2/1	Sharon Rodi	Ann Allison	Dean Anderson	Stephanie Johnson	Norris	Gene and Ted	Romell White	Janet & Norma
2/8	Kristin Cleary	Darlene Olson	Sarah Berke	Marilyn Newborg	Dean & Susan &	Gene and Ted	Laurie Hauge	Janet & Norma
2/15	Ann Allison	Don Olson	Janet Anderson	Clarice Lovstuen	Susan and Jerry	Gene and Ted	Joan Bargman	Janet & Norma
2/22	Anna Olsen	Laurie Hauge	Kristin Cleary	Marilyn Newborg	Dave & Norris	Gene and Ted	Sharon Rodi	Janet & Norma

FEBRUARY

BIRTHDAYS AND ANNIVERSARIES

Birthdays

Dean Anderson	1
Gert Carlson	7
Ryan Kjesbo-Johnson	10
Betty Nelson	10
Sarah (Sunde) Kaiser	11
Elaine Gates	14
Katie Simons	15
Leanne Puckett	21
Lisa Chovan-Spence	22
Jeff Alberts	25
Stella Warwick	25

Anniversaries

Dave and Libby Krogh 28



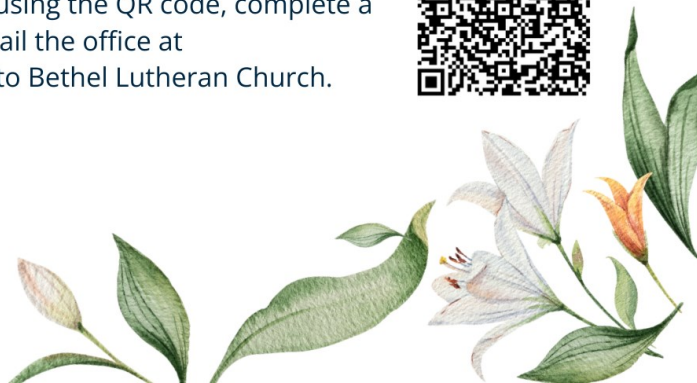
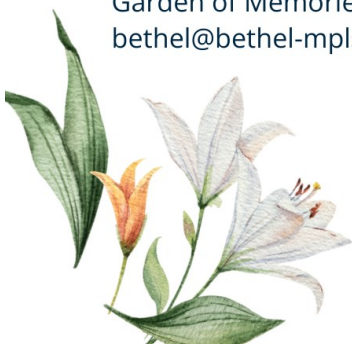
If your birthday or anniversary is missing or incorrect, please let the office know so we can update our records! Thank you!

Garden of Memories



LILIES AND HYDRANGEAS WILL BE ORDERED TO REMEMBER OUR LOVED ONES THIS EASTER.

To add your loved ones to our list, please complete the form using the QR code, complete a Garden of Memories envelope before or after worship, or email the office at bethel@bethel-mpls.org. Checks for memorials can be made to Bethel Lutheran Church.



PRAYER list...

PRAY FOR BETHEL MEMBERS

Barb Saunders	Karen McBride
Alice Evenson	Laurel Jorgensen
Dave and Libby Krogh	Gloria Condon
Hoover Family	Hundt Family
Leonard Phillips	Puckett Family
David and Sue	Darrell Dahl
Dorumsgaard Ayers	Walker Family
Joyce Hughes	Cannon Family
Jerry Johnson	Warwick Family
Gert Carlson	Pikkarainen Family

MORE PEOPLE OF GOD

- Renee Nicole Good and Alex Pretti's families, friends, and community members
- Victims of natural and human disasters
- People of Ukraine, Israeli Citizens, Iranian Citizens, and Palestinians in Gaza
- All of us regarding COVID, RSV, Flu, Mpox
- Black, Brown, Indigenous, and Asian Lives
- People without homes
- Refugees, Migrants and Asylum Seekers
- People affected by gun violence

MEMBERS, RELATIVES AND FRIENDS IN THE SERVICE

Katrel Bishop (Pr B's nephew)
Adam Froisland (Pr B's nephew)
Evan Harrison (Pr B's great nephew)

BETHEL'S MISSION PARTNERS

- ❖ Bancroft Neighborhood Association
- ❖ Bread of Life Deaf Lutheran Church (BOLD)
- ❖ ReconcilingWorks
- ❖ Casa de Oracion - Pentecostal
- ❖ Mpls Area Synod
- ❖ Nokomis Healthy Seniors
- ❖ CANMN

PRAY FOR OUR RELATIVES AND FRIENDS

Vince and Carrie (Kelly Chilvers' friends)
Andrea and Sage (Candy Hickenbotham's family)
Ethylmae Ross (Gloria Condon's aunt)
The family of Nick (Ann Allison's nephew)
Ian (Pr B's friend)
Eric (Pr B's and Mary's family friend)
Julian (Jan Walker's friend)
Kevin Johnson and family (Les' brother)
Beth (Dan Hauge's sister)
Kristian (Pr B's friend)
Steve (Pr B's brother)
Michael (Marilyn Newborg's brother)
Donovan (Angel Cannon's father)
Rita (Sharon Phillips' friend)
Calvin (Angel Cannon's godfather)
Laura (Lisa Chovan Spence's sister)
Wayne (Karen Warwick's dad)
Trent and Michelle (Norma's Family)
Darlene (Jeff Alberts' mom)
Susan (Mike Condon's sister)
John (Kathy Hundt's brother-in-law)
Andrea (Mona Falk's daughter)

You can now submit a Prayer Request on our website.
Please visit bethel-mpls.org and scroll towards the bottom
of our main page to locate the form.

For additions or revisions to the Prayer List, please contact
Pastor Brenda: pastor@bethel-mpls.org
or the Office: office@bethel-mpls.org
(612) 724-3693

MISSION COUNCIL REPORT

First off I want to give a shout out to our wonderful staff, volunteers, and donors for the fabulous work they've been doing distributing food during these difficult times. Kudos to you all!

During our January Mission Council meeting, we went over upcoming events here at Bethel. On February 14th the Seward Concert Band will be playing the Second Saturday Concert. For those of you who have never seen them, they are an impressively good community band and a lot of fun! I hope you will come out and see them! The Thursday, February 12, Community Fun Night will be board game night with chili (regular beef chili, and vegetarian gluten-free chili), salad, and cinnamon rolls. We're hoping for a good turnout; come and meet some neighbors, and enjoy some winter cheer!

Susan Johnson

On behalf of the Mission Council

A Holy Experiment

A different kind of worship service that is more contemplative and exploratory.

The following Sundays at 7pm:

February 2026

Bethel - 8th Atonement - 22nd

*Bethel Lutheran Church
4120 17th Ave S, Minneapolis*

*Atonement
601 E 98th Street, Bloomington*

Family Camp

**SATURDAY, FEB. 21 -
SUNDAY, FEB. 22**

*Please let Pr B know ASAP
if you want to join us:
pastor@bethel-mpls.org*





Herald

BETHEL LUTHERAN CHURCH

4120 17th Ave. S., Minneapolis, MN, 55407

bethel-mpls.org | 612-724-3693

In gratitude, Bethel Lutheran Church amplifies God's grace, nourishes all creation, reaches out, and builds community.

- We are a Reconciling in Christ Congregation.
- Why a Public Church? To impact and enhance the community so that everyone feels a sense of love and belonging.

Join us for our free

COMMUNITY FUN NIGHT



FREE

BOARD GAME NIGHT

Thursday, February 12, 5:30pm-7:30pm

Free Meal at 5:30-6:15pm: Chili, Salad, and Cinnamon Rolls

Activity: Play a variety of Board Games with those in attendance



BETHEL LUTHERAN CHURCH | 4120 17th Ave. S., Minneapolis, MN | bethel-mpls.org