



Volume 90

Number 4

April 2026

PASTOR'S Ponderings

Spring is springing and light is expanding and the temperatures are rising and things are beginning to look new and fresh again! Thanks be to God. (Now, did it snow yesterday or on the day you are reading this?)

As I write on March 19, our largest snowstorm is melting away from three days ago. The ground looks a bit drab and gray, but I believe by Easter Sunday, it will be green and lush with anticipation of a new season. I do not think I am the only one who longs for outdoor warmth, fresh green grass, colorful flowers, and new life.

In the same way, I long for new life and healing for our city and our state after a rough winter of Operation Metro Surge. Things are not over yet. As we continue to love and protect our neighbors, please know that all your emotions about what is happening are all legitimate and expected. If you need a place to process – let's share a beverage, or get a group together, or go for a walk and talk.

I also want to invite you to something that has helped me a great deal. **Singing Resistance is hosting a fundraiser at Bethel on Saturday, April 18 at 3pm.** This group teaches new civil rights resistance songs (many I have shared with you already)

and finds ways to sooth your souls. I highly recommend that you attend this program. It will provide balm for your wounds. I will not be in our state that day, but I promise it will be good for your hearts. Also, they typically raise funds to help our neighbors pay their rent – which is still very necessary.

As our new season continues toward spring, it is my hope and prayer that this new season of resistance and love will continue to grow and make a difference for our community. Friends, if you have ever wondered what "public church" means, simply look at the past few months of what has happened at Bethel. Neighbors gathered and planned, tons of food was shared, people relied on us and we never disappointed, we pivoted to meet the needs of our surrounding community, we were supported by people from all over the globe. This is what the new church – public church – looks like. It looks like being great neighbors and following in Jesus' footsteps. It looks like warmth, fresh green grass, colorful flowers, and new life.



With you, for Jesus,

Pastor Brenda

BUILDING UPDATE

SPRING CLEANING

Speaking of spring cleaning - we have some cleaning and sprucing up dates set and hope you can join us!

Sunday, April 26th, we would love your help with a spring cleaning in our building. We can have a fellowship time with a little more protein after worship, and put everyone to work. If we all commit to being here for 60-90 more minutes, we could have this whole building spic and span that day. Would you please plan on staying to help that day?

Saturday, May 9, we will be assisted by the Scouting America Scouts and their families to clean up the outdoor property. In the past we had about 90-110 folks here picking up trash, pulling weeds, spreading mulch, planting flowers, clearing drains, etc. We would love to have your assistance on that day too. What a great way to get to know the kids and youth, as well as the parents who call Bethel home for their Scouts!

Pr Brenda

Bethel's Spring Cleaning Events

SUNDAY, APRIL 26
AFTER FELLOWSHIP
INDOOR CLEANING

SATURDAY, MAY 9
8AM - 2PM
OUTDOOR CLEANING



BERNIE'S MUSIC UPDATE

As the month begins, we are in Holy Week, observing Maundy Thursday and Good Friday with music that is meditative and helps us to contemplate Christ's death and humanity's role in it. On Easter Sunday we once again uncover and celebrate Christ's resurrection with many alleluias. There is still time to join the choir to sing on Easter Sunday, and to ring handbells on the second Sunday of Easter, April 12. Please contact me at music2023@bethel-mpls.org with questions. Handbell Choir rehearses Mondays, and Bethel Choir rehearses Wednesdays, both at 7 pm. We welcome you to join us regularly or occasionally.

We rounded out our 2nd Saturday concert season last month. It was a lovely season of music ranging from solos to large ensembles, a wide variety of voices and instruments, and music that included folk,

gospel, swing, and classical. Thank you for coming out, sometimes in inclement weather, to support live music and to support Bethel. Thanks also to the members of our ministry teams who helped provide and serve refreshments and foster community conversation after the concerts. Please join us for the next season starting in November!



Peace and Grace,

Bernie Asher

music2023@bethel-mpls.org

BETHEL LUTHERAN CHURCH'S
2ND SATURDAY

CONCERT SERIES

Join us at 3pm every 2nd Saturday
November 2026 - March 2027
for an afternoon of beautiful music.

*STAY TUNED FOR
NEXT YEAR'S LINEUP!*



ALL ARE WELCOME

without exception!



ELLIE'S GRANTS UPDATE

HAPPY APRIL AND HAPPY EASTER!

I hope you are all taking the time to rejoice in the return of growing things. Tulips and daffodils aren't the only things growing lately. Thanks to your hard work, public awareness of Bethel has grown exponentially over the past couple of months. I'm so impressed by what we have been able to do to help our neighbors and keep them safe during the recent and ongoing crisis with ICE, especially with regard to the Little Free Pantry; and those who have kept up with us on social media and beyond have been impressed, too. Every week in our staff meeting, we have been signing piles of thank-you cards to send out to folks from across the country who have donated to help us help our neighbors. A lot of these donations have gone towards the Little Free Pantry, as well as towards rent relief for the congregations who share our space. It's great to know that, thanks to the kindness of others, we will be able to keep our neighbors fed and taken care of for much longer than we ever anticipated would be possible.

In this vein, I am excited to share that we recently received an unsolicited grant from the Jeanine Heller Foundation, a charitable foundation in New York with a mission of "helping people help people." We have never worked with this foundation before, but

some board members heard about us through social media and decided to send us a grant of \$15,000, to be used as we see fit to benefit our neighbors in crisis and support our community. This came as a complete surprise to all of us in the Bethel office, but we're so thrilled to have this money now set aside to further the development of our Little Free Pantry and address some financial needs of our community as they arise. There is no deadline for when we have to spend this grant. Obviously we would like to use a good deal of it to perpetuate the work everyone has been doing this January-March, but if you have an idea you'd like to share as to how we can best use these funds, feel free to send me an email and we can chat further.

Thank you again for your hard work this year so far; without your help we wouldn't be on the map to receive such kind donations to begin with. If you're looking for other ways to keep things rolling, don't forget that we have our receipt collection box at Kowalski's on Chicago Ave, and that there are still several Thrivent projects for 2026 that are in need of sponsorship. You can reach out any time (grantmanager@bethel-mpls.org) or stop by the office on Tuesdays if you'd like to chat about Thrivent or other grants.



Warmly,
Ellie Erb

Bethel Grant Manager
grantmanager@bethel-mpls.org

FEASIBILITY UPDATE

One of the priorities on our Feasibility Study Team's agenda currently is learning more about our monopole contracts and what options we have for making changes to the monopole situation. We are working with a title company in Minneapolis to uncover more information.

Another item we are working on is determining what criteria we will use to make decisions when a proposal for Bethel's property is presented. Remember that we will include the congregation

in making any big decisions.

The Feasibility Study Team and the Board of Administrators have a joint meeting planned for April to share information and brainstorm together.

Please feel free to share your comments and/or ideas with one of our committee members. We appreciate your help and support.

Laurie Hauge, Ann Allison, Gene Rodi, Don Olson, Pastor Brenda, and Jim Lair, Chair

feasibility@bethel-mpls.org

BOARD OF ADMINISTRATORS

GREETINGS FROM YOUR BOARD OF ADMINISTRATORS!

It was wonderful to see so many of your faces, and to hear your voices, at our annual meeting at the beginning of March. The state of our congregation is really very strong. Bethel has been stepping up to serve in and with our community in new ways this year. It is a place for action and relationship-building. It is a place for gathering and for sharing food. Our building and the space we steward is a gift.

Bethel is present in the now.

Bethel is also looking forward toward the future -- recognizing that we need to change, adapt, and listen to new callings.

At the annual meeting, our conversation focused on the need to define and prioritize our values that will guide any future decisions about our property.

We also discussed the need to plan for our congregation's future, in addition to the future of our space, and the need to understand how those two topics relate to each other.

I encourage you all to continue these conversations. We will look forward to continuing them with you.

In service,
Sarah Berke

President

On behalf of the Board of Administrators

Bethel's

HEALTH FAIR & BLOOD DRIVE

♥ Memorial Blood Centers
FAIRVIEW



MORE INFO:



JOIN US ON
MAY 9, 2026

FROM
11AM - 4PM
BETHEL LUTHERAN CHURCH
4120 17TH AVE. S.
MINNEAPOLIS, MN 55407

MINISTRY CALENDAR

Sunday	Monday	Tuesday	Wednesday
<p>29</p> <p>Bethel Choir Sings Handbell Choir Plays PALM SUNDAY 10:00am Bethel Worship 10:15am Sunday School 11:00am Fellowship Time 1:00pm Pentecostal Casa Worship 3:00pm Alliance Coven Friends 5:30pm Minneapolis Jo 7:00pm El Nuevo Despertar AA</p>	<p>30</p> <p>Bethel Office Closed 8:30am Waxing -- Half of Gym 6:00pm Bridge to Shore Studying 7:00pm Bell Choir 7:00pm Bridge to Shore AA 7:00pm El Nuevo Despertar AA</p>	<p>31</p> <p>7:00am AA Meditation 9:30am NHS Coffee Time and Cribbage 9:30am OA HOW Meeting 9:30am The Curiosity Crew School 10:00am NHS Exercise 10:00am Staff Meeting 11:00am NHS Counseling 5:30pm Minneapolis Jo 6:00pm Luz Alas Naciones 7:00pm El Nuevo Despertar AA 7:00pm Pentecostal Casa Music</p>	<p>1</p> <p>8:30am Waxing -- Narthex 10:00am NHS Women's Art Group 10:00am NHS Yoga 12:00pm Hybrid Bible Study 6:00pm Luz Alas Naciones 6:30pm Continuous Action AA 6:30pm Nokomis Quilters 7:00pm Bethel Choir 7:00pm El Nuevo Despertar AA</p>
<p>5</p> <p>Bethel Choir Sings EASTER SUNDAY Handbell Choir Plays 9:00am Easter Breakfast 10:00am Bethel Worship 11:00am Fellowship Time 1:00pm Casa De Oracion Fellowship 1:00pm Pentecostal Casa Worship 5:30pm Minneapolis Jo 6:00pm La Voz de Dios 7:00pm El Nuevo Despertar AA</p>	<p>6</p> <p>Bethel Closed -- Easter Holiday 10:00am CANMN Intake 6:00pm Bridge to Shore Studying 6:00pm Girl Scout Troop 18896 7:00pm Bell Choir 7:00pm Bridge to Shore AA 7:00pm El Nuevo Despertar AA</p>	<p>7</p> <p>7:00am AA Meditation 9:30am NHS Coffee Time and Cribbage 9:30am OA HOW Meeting 9:30am The Curiosity Crew School 10:00am NHS Exercise 10:00am Staff Meeting 2:00pm NHS Counseling 5:30pm Minneapolis Jo 5:45pm Cub Scout Committee Meeting 6:00pm Luz Alas Naciones 6:30pm Scout Troop 38 7:00pm El Nuevo Despertar AA 7:00pm Pentecostal Casa Music</p>	<p>8</p> <p>9:30am Ensemble Music 10:00am NHS Women's Art Group 10:00am NHS Yoga 11:00am NHS Counseling 12:00pm Hybrid Bible Study 6:00pm Luz Alas Naciones 6:00pm La Voz de Dios 6:30pm Continuous Action AA 7:00pm Bethel Choir 7:00pm El Nuevo Despertar AA</p>
<p>12</p> <p>Bethel Handbells Play 10:00am Bethel Worship 10:15am Sunday School 11:00am Fellowship Time 11:00am RIH Lunch and Discussion 1:00pm Pentecostal Casa Worship 5:30pm Minneapolis Jo 6:00pm La Voz de Dios 7:00pm A Holy Experiment - Bethel 7:00pm El Nuevo Despertar AA</p>	<p>13</p> <p>Bethel Office Closed 12:00pm Senior paint on Mondays 7:00pm Bridge to Shore AA 7:00pm El Nuevo Despertar AA 7:00pm Troop 38 Committee Meeting 8:00pm Bridge to Shore AA - Meeting</p>	<p>14</p> <p>7:00am AA Meditation 9:30am NHS Coffee Time and Cribbage 9:30am OA HOW Meeting 9:30am Operation Love Quilters 9:30am The Curiosity Crew School 10:00am NHS Exercise 10:00am Staff Meeting 1:00pm NHS Grief Support Group 5:30pm Minneapolis Jo 6:00pm Luz Alas Naciones 6:30pm Scout Troop 38 7:00pm El Nuevo Despertar AA 7:00pm Pentecostal Casa Music</p>	<p>15</p> <p>9:30am Ensemble Music 10:00am NHS Women's Art Group 10:00am NHS Yoga 6:00pm Luz Alas Naciones 6:00pm La Voz de Dios 6:30pm Continuous Action AA 6:30pm Minnesota Nature Photo C 7:00pm Bethel Choir 7:00pm El Nuevo Despertar AA Ev 7:30pm Continuous Action Leader</p>
<p>19</p> <p>10:00am Bethel Worship 10:15am Sunday School 11:00am Fellowship Time 1:00pm Casa De Oracion Fellowship 1:00pm Pentecostal Casa Worship 5:30pm Minneapolis Jo 6:00pm La Voz de Dios 7:00pm El Nuevo Despertar AA</p>	<p>20</p> <p>Bethel Office Closed 9:45am Watercolor Theory--Comm Ed 10:00am CANMN Intake 12:00pm Senior paint on Mondays 6:00pm Girl Scout Troop 18896 7:00pm Bell Choir 7:00pm Bridge to Shore AA 7:00pm El Nuevo Despertar AA 7:00pm El Nuevo Despertar AA Event</p>	<p>21</p> <p>7:00am AA Meditation 9:30am NHS Coffee Time and Cribbage 9:30am OA HOW Meeting 9:30am The Curiosity Crew School 10:00am NHS Exercise 10:00am Staff Meeting 4:00pm NHS Board Meeting 5:30pm Minneapolis Jo 6:00pm Luz Alas Naciones 6:30pm Mission Council 6:30pm Scout Troop 38 7:00pm El Nuevo Despertar AA 7:00pm Pentecostal Casa Music</p>	<p>22</p> <p>9:30am Ensemble Music 10:00am NHS Women's Art Group 10:00am NHS Yoga 6:00pm Luz Alas Naciones 6:00pm La Voz de Dios 6:30pm Continuous Action AA 7:00pm Bethel Choir 7:00pm El Nuevo Despertar AA Ev</p>
<p>26</p> <p>Bethel Choir Sings 9:30am Our Role in Community 10:00am Bethel Worship 10:00am BNA Garage Sale Info Table 10:15am Sunday School 11:00am Fellowship Time 11:30am Sandwich Making Event 11:30am Bethel's Spring Cleaning 1:00pm Pentecostal Casa Worship 5:30pm Minneapolis Jo 6:00pm La Voz de Dios 7:00pm A Holy Experiment - Atonement 7:00pm El Nuevo Despertar AA</p>	<p>27</p> <p>Bethel Office Closed 12:00pm Senior paint on Mondays 2:30pm Feasibility Study Team 7:00pm Bell Choir 7:00pm Bridge to Shore AA 7:00pm El Nuevo Despertar AA</p>	<p>28</p> <p>7:00am AA Meditation 9:30am NHS Coffee Time and Cribbage 9:30am OA HOW Meeting 9:30am The Curiosity Crew School 10:00am NHS Exercise 10:00am Staff Meeting 5:30pm Minneapolis Jo 6:00pm Luz Alas Naciones 6:30pm Scout Troop 38 7:00pm El Nuevo Despertar AA 7:00pm Pentecostal Casa Music</p>	<p>29</p> <p>9:30am Ensemble Music 10:00am NHS Women's Art Group 10:00am NHS Yoga 12:00pm Hybrid Bible Study 6:00pm Luz Alas Naciones 6:00pm La Voz de Dios 6:30pm Continuous Action AA 7:00pm Bethel Choir 7:00pm El Nuevo Despertar AA</p>

DAR — APRIL 2026

Monday	Thursday	Friday	Saturday
	<p>2 MAUNDY THURSDAY 9:00am HEDFEX School 9:00am NHS Foot Care 9:30am NHS Nurse Is In/Blood Pressure 10:00am NHS Exercise 11:00am NHS Senior Discussion Group 5:00pm CANMN Distribution 6:00pm BNA Board Meeting 6:15pm Seward Concert Band Rehearsal 7:00pm El Nuevo Despertar AA 7:00pm Maundy Thursday at St. Peder's 7:00pm Up the Creek AA & Meeting</p>	<p>3 GOOD FRIDAY 8:30am Waxing -- Half of Gym 6:00pm Pentecostal Casa Worship 7:00pm El Nuevo Despertar AA 7:00pm Good Friday Worship</p>	<p>4 8:00am Piano tuning 9:00am AA Amigos 10:00am Bethel's Easter Egg Hunt 10:00am Set up for Easter Breakfast 11:00am CANMN Deliveries 11:00am Set up sanctuary for Easter 6:00pm Luz Alas Naciones 7:00pm El Nuevo Despertar AA</p>
	<p>9 9:00am HEDFEX School 9:30am NHS Nurse Is In/Blood Pressure 10:00am NHS Exercise 11:15am NHS Lunch and Movie 5:00pm CANMN Distribution 5:45pm BNA Board Meeting 7:00pm El Nuevo Despertar AA 7:00pm Up the Creek AA 7:15pm Community Safety Meeting</p>	<p>10 9:30am Ensemble Music 6:00pm La Voz de Dios 6:00pm Pentecostal Casa Worship 7:00pm El Nuevo Despertar AA</p>	<p>11 8:30am Pack 38 Meeting 9:00am AA Amigos 10:00am Roosevelt Coupon Sales 11:00am CANMN Deliveries 1:00pm Celebration of Life -- Sharon Phillips 2:00pm Fellowship for Sharon Phillips 2:00pm Luz Alas Naciones 3:00pm Roosevelt Coupon Sales 6:00pm Luz Alas Naciones 7:00pm El Nuevo Despertar AA</p>
<p>Club ent ship Meeting</p>	<p>16 9:00am HEDFEX School 9:30am NHS Nurse Is In/Blood Pressure 10:00am NHS Exercise 11:00am NHS Support As We Age 12:00pm NHS - Caregiver Happy Hour 5:00pm CANMN Distribution 7:00pm Board of Administrators 7:00pm El Nuevo Despertar AA Event 7:00pm Up the Creek AA 7:15pm Community Safety Meeting</p>	<p>17 9:30am Ensemble Music 6:00pm La Voz de Dios 6:00pm Pentecostal Casa Worship 7:00pm El Nuevo Despertar AA 7:00pm El Nuevo Despertar AA Event 7:00pm Girl Scout Troop 14854 Overnight</p> <p style="text-align: center;">Herald Deadline 12:00pm</p>	<p>18 12:01am Girl Scout Troop Overnight 9:00am AA Amigos 11:00am CANMN Deliveries 2:30pm BNA Singing Resistance 6:00pm Luz Alas Naciones 7:00pm El Nuevo Despertar AA 7:00pm El Nuevo Despertar AA Event</p>
<p>ent</p>	<p>23 9:00am HEDFEX School 9:30am NHS Nurse Is In/Blood Pressure 10:00am Building and Grounds Meeting 10:00am NHS Exercise 11:00am NHS Community Connection 12:10pm HEDFEX School Gym Time 12:30pm NHS Diabetes Support Group 5:00pm CANMN Distribution 7:00pm El Nuevo Despertar AA Event 7:00pm Up the Creek AA</p>	<p>24 9:30am Ensemble Music 6:00pm La Voz de Dios 6:00pm Pentecostal Casa Worship 7:00pm El Nuevo Despertar AA 7:00pm El Nuevo Despertar AA Event</p>	<p>25 8:30am Pack 38 Meeting 9:00am AA Amigos 11:00am CANMN Deliveries 12:00pm El Nuevo Despertar AA Event 6:00pm Luz Alas Naciones 7:00pm El Nuevo Despertar AA</p>
	<p>30 8:30am Gertens Plant Sale Drop Off 9:00am HEDFEX School 9:30am NHS Nurse Is In/Blood Pressure 10:00am NHS Exercise 11:00am NHS Senior Project 5:00pm CANMN Distribution 7:00pm El Nuevo Despertar AA 7:00pm Up the Creek AA</p>	<p>1 9:00-2:00pm Gertens Plant Sale Pick-up 9:30am Ensemble Music 6:00pm La Voz de Dios 6:00pm Pentecostal Casa Worship 7:00pm El Nuevo Despertar AA</p>	<p>2 9:00am AA Amigos 11:00am CANMN Deliveries 6:00pm Luz Alas Naciones 7:00pm El Nuevo Despertar AA</p>

BIBLE STUDY WITH PR BRENDA

Wednesdays at 12pm

Online meeting room:

<https://us02web.zoom.us/j/81542792093>



And in-person in the Fireside Room.

4/1	John 20:1-18
4/8	Psalm 111 1 Peter 1:3-9
4/15	Pr B on vacation
4/21	Pr B on vacation
4/29	Ps 31:1-5, 15-16 John 14:1-14

CHURCH STAFF AND LEADERSHIP

Rev. Brenda Froisland, Pastor:

pastor@bethel-mpls.org

Operations Manager:

Regan Saunders

bethel@bethel-mpls.org

Music:

Bernie Asher, Music Director

music2023@bethel-mpls.org

Anne Phillips, Musician

musician2023@bethel-mpls.org

Office Manager:

Margaret Borg

office@bethel-mpls.org

Building Facilitator:

Kristian Ask

building@bethel-mpls.org

Assistant Custodians:

Michael Hauge, Kingston Normil

Jaden Watson, Josh Weber

and Franklin Wohnoutka

Grant Manager:

Ellie Erb

grantmanager@bethel-mpls.org

Finance Coordinator:

Teresa O'Brien

assttreas@bethel-mpls.org

Visitation Minister:

Susan Johnson

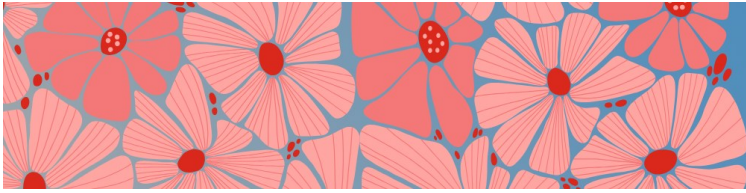
visitation@bethel-mpls.org

For a full list of our staff and leadership members, please visit our website:



SUNDAY SERVERS

Date	Assisting Minister	Lector	Cantor	Sacristy	Ushers	Streaming	Hospitality	Altar Guild
4/5	Susan Johnson	Stephanie Johnson	Bernie Asher	Stephanie Johnson	Sarah and Doug	Gene and Ted	Alice Evenson	Barb & Barb
4/12	Kristin Cleary	Ann Allison	Dean Anderson	Marilyn Newborg	Dave S and Dean	Gene and Ted	Sharon Rodi	Barb & Barb
4/19	Sharon Rodi	Anna Olsen	Janet Anderson	Clarice Lovstuen	Susan and Jerry	Gene and Ted	Joan Bargman	Barb & Barb
4/26	Ann Allison	Darlene Olson	Sarah Berke	Marilyn Newborg	Dave K and Norris	Gene and Ted	Laurie Hauge	Barb & Barb



APRIL

BIRTHDAYS AND ANNIVERSARIES

Birthdays

Heidi Nordine	1
Karen Warwick	1
Janet Anderson	4
Rachel Allison	4
Julie Ness	8
Brenda Froisland	19
Linda Frazier	21
Frederick Cross	22
Josi Alberts	23
Ray Pikkarainen	24
Joan Bargman	29
Joni Hodgman	29

Anniversaries

Brenda Froisland and Mary Chilvers	8
Jeff and Jody Alberts	13
Jeff and Michelle Kevelin	24

If your birthday or anniversary is missing or incorrect, please let the office know so we can update our records! Thank you!

A Holy Experiment

A different kind of worship service that is more contemplative and exploratory.

2026

April: 12th at Bethel, 26th at Atonement

May: 3rd at Atonement, 17th at Bethel

June: 7th at Atonement, 28th at Bethel

July: 12th at Atonement, 19th at Bethel

August: 2nd at Atonement, 16th at Bethel

at 7:00pm

Bethel - 4120 17th Ave S, Minneapolis

Atonement - 601 E 98th Street, Bloomington

PRAYER list...

PRAY FOR BETHEL MEMBERS

Bob Wandberg	Karen McBride
Meredith LaCount	Laurel Jorgensen
Anna Olsen	Gloria Condon
Dave and Libby Krogh	Hundt Family
Barb Saunders	Puckett Family
Hoover Family	Darrell Dahl
Leonard Phillips	Walker Family
David and Sue	Cannon Family
Dorumsgaard Ayers	Warwick Family
Joyce Hughes	Pikkarainen Family
Gert Carlson	

MORE PEOPLE OF GOD

- People struggling with mental illness and their loved ones
- Victims of natural and human disasters
- People of Ukraine, Israeli Citizens, Iranian Citizens, and Palestinians in Gaza
- All of us regarding COVID, RSV, Flu, Mpox
- Black, Brown, Indigenous, and Asian Lives
- People without homes
- Refugees, Migrants and Asylum Seekers
- People affected by gun violence

MEMBERS, RELATIVES

AND FRIENDS IN THE SERVICE

Katrel Bishop (Pr B's nephew)
Adam Froisland (Pr B's nephew)

PRAY FOR OUR RELATIVES AND FRIENDS

Bill (Barb Wandberg's brother)
Lennon (Cole and Bryan's niece)
Sonia (Gene Rodi's sister)
Beth (Dan Hauge's sister)
Vince and Carrie (Kelly Chilvers' friends)
Andrea and Sage (Candy Hickenbotham's family)
Ethylmae Ross (Gloria Condon's aunt)
Ian (Pr B's friend)
Eric (Pr B's and Mary's family friend)
Julian (Jan Walker's friend)
Kevin Johnson and family (Les' brother)
Kristian (Pr B's friend)
Steve (Pr B's brother)
Michael (Marilyn Newborg's brother)
Donovan (Angel Cannon's father)
Rita (Sharon Phillips' friend)
Calvin (Angel Cannon's godfather)
Wayne (Karen Warwick's dad)
Trent and Michelle (Norma's family)
Darlene (Jeff Alberts' mom)
Susan (Mike Condon's sister)
John (Kathy Hundt's brother-in-law)

BETHEL'S MISSION PARTNERS

❖ReconcilingWorks ❖Casa de Oracion - Pentecostal
❖Mpls Area Synod ❖Nokomis Healthy Seniors ❖CANMN
❖Iglesia Evangelica Luz Alas Naciones ❖Iglesia Evangelica La Voz de Dios
❖Bancroft Neighborhood Association ❖Bread of Life Deaf Lutheran Church (BOLD)

You can now submit a Prayer Request on our website.
Please visit bethel-mpls.org and scroll towards the bottom
of our main page to locate the form.

For additions or revisions to the Prayer List, please contact
Pastor Brenda: pastor@bethel-mpls.org
or the Office: office@bethel-mpls.org
(612) 724-3693

MISSION COUNCIL REPORT

HI EVERYONE,

Spring is here. I hope everyone takes the time to enjoy the warm and sunny days ahead of us!

Here are April's Mental Health Connect programs: "Nature as Therapy" will be held on Tuesday, April 14, 2026, from 7:00-8:30 PM via Zoom. The link for the program will be emailed to Bethel members. "Choosing Hope: 5 Practices for Living Fully" will be held on Tuesday, April 21, 2026, 6:00 PM-8:00 PM, in person at Bethlehem Lutheran Church. Please visit <https://www.mhconnect.org/find-mhc> to learn more. A reminder that the Mental Health Connect navigator line is 612-642-1220 or email navigator@mhconnect.org.

The Mission Council is working on planning the May 14th Potted Plant Polka Party Community Fun Night. We will be making a potted planter, with a free meal of chicken and biscuits. Ellie, our grant manager, and others are working on a Saturday, May 9 Blood Drive and Health Fair. Our outside Spring Clean Up Day is the same day, so plan on coming to get a lot done in one visit! Stay tuned for more information on this event. We are also planning on holding an inside Spring Clean Up Day; on Sunday, April 26 after the church service. The Free Little Pantry continues to be well-used, and we are still operating as a hub for food distribution. A big thank you to the many, many generous donors and volunteers who are dedicated to making sure our neighbors are fed.

Peace to you all,
Susan Johnson

On behalf of the Mission Council

Join us for our free
**COMMUNITY
FUN NIGHT**

**POTTED PLANT
POLKA PARTY**

Thursday, May 14, 5:30pm-7:30pm



Free Meal at 5:30-6:15pm: Chicken and Biscuits
Activity: Make a potted plant and dance the polka!



BETHEL LUTHERAN CHURCH | 4120 17th Ave. S., Minneapolis, MN | bethel-mpls.org



Herald

BETHEL LUTHERAN CHURCH

4120 17th Ave. S., Minneapolis, MN, 55407

bethel-mpls.org | 612-724-3693

In gratitude, Bethel Lutheran Church amplifies God's grace, nourishes all creation, reaches out, and builds community.

- We are a Reconciling in Christ Congregation.
- Why a Public Church? To impact and enhance the community so that everyone feels a sense of love and belonging.



Easter

AT BETHEL

EASTER BREAKFAST

Sunday, April 5 at 9am

Please RSVP to reserve your spot:

bethel@bethel-mpls.org

(612) 724-3693

or complete

the form here:



EASTER SERVICE

Sunday, April 5 at 10am

EASTER EGG HUNT

Saturday, April 4 at 10am

*Join us at Bethel for an Easter Egg Hunt!
Kids up to 5th grade are welcome to join.*