



In gratitude, Bethel Lutheran Church amplifies God's grace, nourishes all creation, reaches out, and builds community.

- We are a Reconciling in Christ Congregation.
- Why a Public Church? To impact and enhance the community so that everyone feels a sense of love and belonging.



# **FIFTH SUNDAY OF EASTER**

**MAY 3, 2026**

Bethel Lutheran Church - In-person and Online  
YouTube: @bethelmpls

# FIFTH SUNDAY OF EASTER

May 3, 2026, 10:00AM

We welcome to the Lord's Table all people, without exception, who desire to receive the blessings of Christ's body and blood in this sacramental meal of bread and wine. If you are online, please prepare your own table with bread, wine, and/or a treat for anyone not receiving communion.

**Boldface font indicates congregational response.**

*Worship leaders will indicate when to stand and sit, as you are able.*

## GATHERING

---

### Gathering Music

"Jesus Christ Is Risen Today" by Healey Willan

### Welcome and Announcements

### Greeting

Wherever you are on your journey of faith, we believe that God meets us here. We gather in the name of the Creator, and of the Savior, and of the Holy Spirit. **Amen.**

### Opening Hymn ELW 365

"Jesus Christ Is Risen Today"



1 Je - sus Christ is ris'n to - day, Al - le - lu - ia!  
2 Hymns of praise then let us sing, Al - le - lu - ia!  
3 But the pains which he en - dured, Al - le - lu - ia!  
4 Sing we to our God a - bove, Al - le - lu - ia!



our tri - um - phant ho - ly day, Al - le - lu - ia!  
un - to Christ, our heav'n - ly king, Al - le - lu - ia!  
our sal - va - tion have pro - cured; Al - le - lu - ia!  
praise e - ter - nal as his love; Al - le - lu - ia!



who did once up - on the cross, Al - le - lu - ia!  
who en - dured the cross and grave, Al - le - lu - ia!  
now a - bove the sky he's king, Al - le - lu - ia!  
praise him, all you heav'n-ly host, Al - le - lu - ia!



suf - fer to re - deem our loss. Al - le - lu - ia!  
sin - ners to re - deem and save. Al - le - lu - ia!  
where the an - gels ev - er sing. Al - le - lu - ia!  
Fa - ther, Son, and Ho - ly Ghost. Al - le - lu - ia!

Text: Latin carol, 14th cent., sts. 1-3; tr. J. Walsh, *Lyra Davidica*, 1708, alt.; Charles Wesley, 1707-1788, st. 4  
Music: EASTER HYMN, J. Walsh, *Lyra Davidica*, 1708

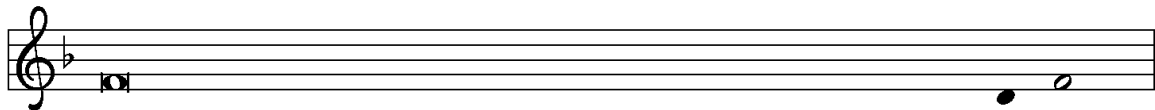
## Prayer of the Day

Let us pray. Almighty God, **your Son Jesus Christ is the way, the truth, and the life. Give us grace to love one another, to follow in the way of his commandments, and to share his risen life with all the world. In Jesus' name we pray. Amen.**

## Kyrie



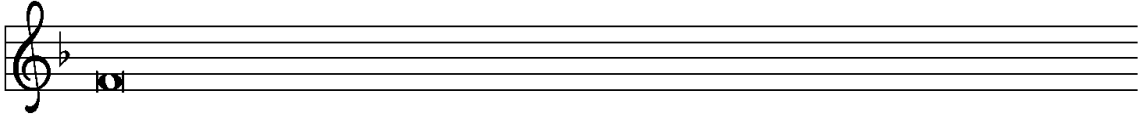
In peace, let us pray to the Lord. Lord, have mer - cy.



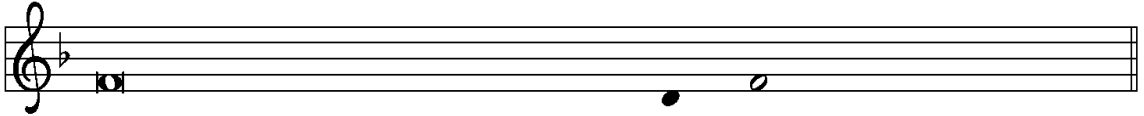
For the peace from above, and for our salvation, let us pray to the Lord.



Lord, have mer - cy.



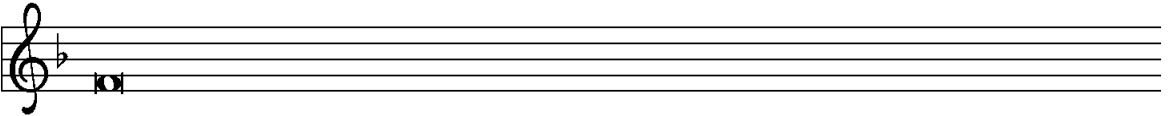
For the peace of the whole world, for the well-being of the church of God,



and for the unity of all, let us pray to the Lord.



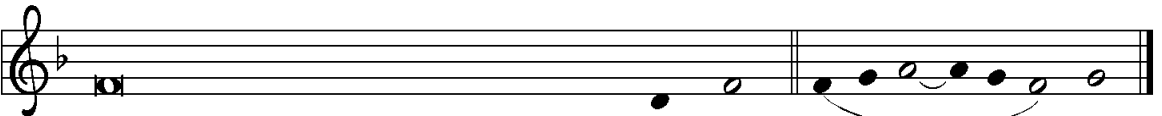
Lord, have mer - cy.



For this holy house, and for all who offer here their worship and praise,



let us pray to the Lord. Lord, have mer - cy.

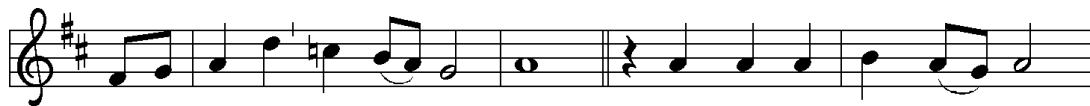


Help, save, comfort, and defend us, gra - cious Lord. A - men.

## This is the Feast



This is the feast of vic-to-ry for our God. Al-le - lu - ia,



al - le - lu - ia, al - le - lu - ia. 1 Wor - thy is Christ, the Lamb



who was slain, whose blood set us free to be peo - ple of God.



This is the feast of vic-to-ry for our God. Al-le - lu - ia,



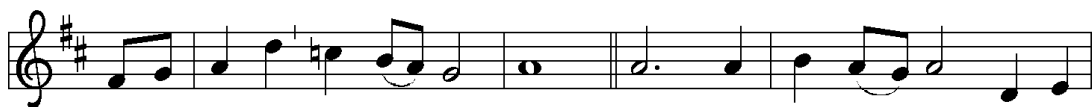
al - le - lu - ia, al - le - lu - ia. 2 Pow - er, rich - es, wis - dom, and



strength, and hon - or, bless - ing, and glo - ry are God's



This is the feast of vic-to-ry for our God. Al-le - lu - ia,



al - le - lu - ia, al - le - lu - ia. 3 Sing with all the peo - ple of



God, and join in the hymn of all cre - a - tion: Bless - ing, hon - or,

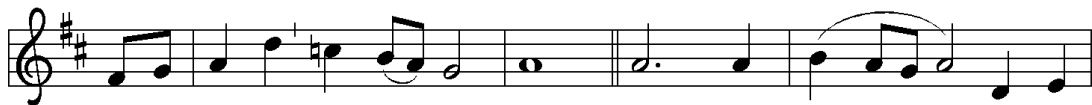


glo - ry, and might be to God and the Lamb for - ev - er. A - men.

*Refrain*



This is the feast of vic - to - ry for our God. Al - le - lu - ia,



al - le - lu - ia, al - le - lu - ia. 4 For the Lamb who was



slain has be - gun to reign. Al - le - lu - ia.

*Final refrain*



This is the feast of vic - to - ry for our God.



Al - le - lu - ia, al - le - lu - ia, al - le - lu - ia.

## WORD

---

### Lesson

Psalm 31:1-5, 15-16 *First Nations*

Grandfather, I wrap myself in you like a warm blanket, for you are my safe space. **Never let shame cross my path.** You who always do what is right, set me free from those who harm me. **Bend down low and turn your ear to hear my weak voice.** Come quickly to my aid. **Be the strong rock I can rest on, my strong lodge where I am kept safe from all harm.** You have been my rock and my strong lodge. **Because I honor your name, you will guide me on the road of life.** You will keep me safe from the hidden trap my enemies have laid for me, for you are the strength of my life. **Grandfather, I place the care of my spirit into your hands.** You are the one who paid the price to set me free and make me whole. **You are my Sacred Truth Giver.** My life from beginning to end is in your hands. **Rescue me from the power of my enemies, from all who would hunt me down and do me harm.** Make your face shine like the rising sun on the one who serves you. **Show to me your love that remains faithful and true, and set me free.**

Word of God. **Word of life.**

### Children's Message, then Sunday School

*Children and the young at heart are invited to the front of the sanctuary.*

### Gospel Acclamation



Al - le - lu - ia. Lord, to whom shall we go? You have the



words of e - ter - nal life. Al - le - lu - ia. Al - le - lu - ia.

The Gospel according to John, the fourteenth chapter. **Glory to you, O Lord.**

"Do not let your hearts fall to the ground," he encouraged them. "Trust in the Great Spirit, and trust in me. My Father's lodge has room for everyone. If this were not so, then why would I tell you that I am going to prepare a place for you? When I am finished, I will come back to you, so that you will always be with me. You already know the path to where I am going." Thomas interrupted and said, "**Wisdomkeeper, if we do not know where you are going, how can we know the path?**" "I am the Great Spirit's pathway, the truth about who [Divine] really is, and the life of beauty and harmony [Divine] offers to all. There is no other guide who can take you to the Father. To know me is to know my Father, so from now on you know [Divine] and have seen [Divine]." Philip said to him, "**Wisdomkeeper, show us the Father, and that will be enough.**"

"Philip," Jesus said, "how long have you walked with me, and still you do not know me? How can you say, 'Show us the Father?' The ones who have seen me have seen the Father. Do you not believe that the Father is in me and I am in the Father? The words I speak to you are not my own. It is the Father speaking in me. Trust in me, for I am in the Father and [Divine] is in me. Or at least trust in the works my Father does through me. I speak from my heart. The ones who trust in me will do the same things I do, and even greater things, for I am going away to my Father. When you ask the Father for anything, ask it in my name, representing who I am. When you ask for anything in this way, I will do it to bring honor to my Father."

The Gospel of the Lord. **Praise to you, O Christ.**

**Sermon**



1 Come, my way, my truth, my life: such a  
 2 Come, my light, my feast, my strength: such a  
 3 Come, my joy, my love, my heart: such a



way as gives us breath; such a truth as ends all  
 light as shows a feast; such a feast as mends in  
 joy as none can move; such a love as none can



strife; such a life as kill - eth death.  
 length; such a strength as makes his guest.  
 part; such a heart as joys in love.

Text: George Herbert, 1593–1632

Music: THE CALL, Ralph Vaughan Williams, 1872–1958

Outside USA: Music © 1911 Stainer and Bell, Ltd., 23 Gruneisen Road, London N3 1DZ, UK. www.stainer.co.uk.

### Affirmation of Faith

by Rev. Sarah Speed

**We believe that creation is inextricably linked.**

**We belong to one another in an undeniable way.**

**We are bone of bone and flesh of flesh, life breathed into dust.**

**We believe that God invites us to live into that truth — to love without abandon,**

**to see the good in one another, to trust that all belong to God.**

**We know that this life of connection is easier said than done, which is why we gather in this place, together, generation after generation, to be reminded: We see God in each other.**

**This we believe.**

## Prayer Updates

### Prayers of the People

In this moment, we open the doors of our lives to the call of our Creator, the God of all people, who invites us to become more than we can ask or imagine.

*A brief silence.*

*Each petition ends with a response:*

Lord, receive our prayer, **and in your love, answer.**

We lift these and all our prayers to you, O God, confident that you will turn to us and be gracious to us and all people, without exception. **Amen.**

### Peace

The peace of Jesus is with you always. **And also with you.**

### Offering

*For checks and cash offerings, please place them in the offering plate at the back of the sanctuary. For members, if you are making a cash donation, place it in an envelope with your name on it. For online giving through Square scan the QR code. To pay with PayPal, please visit our website: [Bethel-mpls.org](http://Bethel-mpls.org).*

*Online worshipers, please send checks directly to:  
Bethel Lutheran 4120 17th Ave S, Mpls, MN 55407  
Thank you for your generosity!*

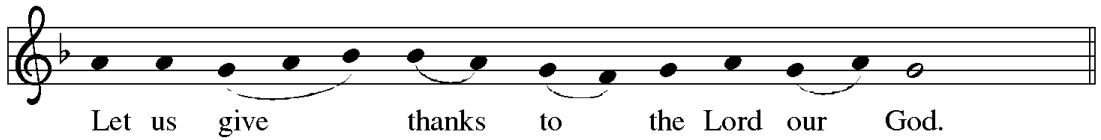
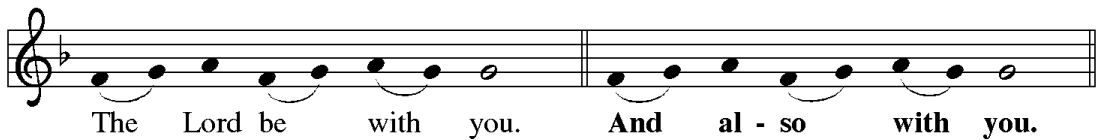


### Offering Prayer

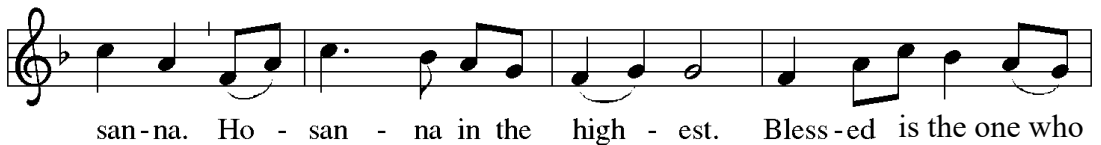
Let us pray. O God, **maker of heaven and earth, your steadfast love embraces all creation. You send rain and sunshine to nourish the earth and bring forth its bounty. Through these gifts of bread and wine, draw us into the death and life of your Son, who calls us to bear witness to his saving work. We ask this in Jesus' name. Amen.**

# MEAL

## The Great Thanksgiving



## Holy, Holy, Holy



## Words of Institution

For as often as we eat this bread and drink this cup, we proclaim the mystery of faith, that **Christ has died. Christ is risen. Christ will come again.**

## Lord's Prayer

Gathered into one by the Holy Spirit, let us pray as Jesus taught us:

**Our Father in heaven, hallowed be your name, your kingdom come, your will be done, on earth as in heaven. Give us today our daily bread. Forgive us our sins as we forgive those who sin against us. Save us from the time of trial and deliver us from evil. For the kingdom, the power, and the glory are yours, now and forever. Amen.**

## Invitation to Communion

### Communion Hymn ELW 379

"Now the Green Blade Rises"



1 Now the green blade ris - es from the bur - ied grain,  
2 In the grave they laid him, love by ha - tred slain,  
3 Forth he came at Eas - ter like the ris - en grain,  
4 When our hearts are win - try, griev - ing, or in pain,



wheat that in dark earth man - y days has lain;  
think - ing that he would nev - er wake a - gain,  
he that for three days in the grave had lain;  
your touch can call us back to life a - gain,



love lives a - gain, that with the dead has been;  
 laid in the earth like grain that sleeps un - seen;  
 raised from the dead, my liv - ing Lord is seen;  
 fields of our hearts that dead and bare have been;



love is come a - gain like wheat a - ris - ing green.

**Communion Hymn ELW 477**

**"I Received the Living God"**

*Refrain*



I re - ceived the liv - ing God, and my heart is full of joy.



I re - ceived the liv - ing God, and my heart is full of joy.



- 1 Je - sus said: I am the bread, knead - ed long to give you life;
- 2 Je - sus said: I am the way, and my Fa - ther longs for you;
- 3 Je - sus said: I am the truth; come and fol - low close to me.
- 4 Je - sus said: I am the life, far from whom no thing can grow,

*Refrain*



you who will par - take of me need not ev - er fear to die.  
 so I come to bring you home to be one with us a - new.  
 You will know me in your heart, and my word shall make you free.  
 but re - ceive this liv - ing bread, and my Spir - it you shall know.

## Post Communion Blessing

The body and blood of our Lord Jesus Christ strengthens you in faith, holds you in God's grace, forgives your sins, and empowers you to love all others.

**Amen.**

## Post Communion Prayer

Let us pray. God of our salvation, **we give you thanks for this meal that restores our souls, reconciles us to you, and strengthens us for the journey. Help us become Christ's body in the world, bearing witness to your love for all creation. Amen.**

## SENDING

---

### Benediction

Christ is risen! **Christ is risen indeed, Alleluia!** Go out this day, and always, praising and thanking God for this incredible news. You are blessed in the name of our faithful and loving God, Father, Son, and Holy Spirit. Blessed to be a blessing! **Amen.**

### Sending Hymn ELW 377

"Alleluia! Jesus Is Risen!"



1	Al - le - lu - ia!	Je - sus	is	ris - en!
2	Walk - ing the way,	Christ in the	cen - ter	
3	Je - sus the vine,	we are the	branch - es;	
4	Weep - ing, be gone;	sor - row, be	si - lent:	
5	Cit - y of God,	Eas - ter for	- ev - er,	



Trum - pets re - sound - ing	in	glo - ri - ous	light!
tell - ing the sto - ry	to	o - pen	our eyes;
life in the Spir - it	the	fruit of the	tree;
death put a - sun - der,	and	Eas - ter	is bright.
gold - en Je - ru - sa - lem,	Je - sus	the	Lamb,



Splen - dor, the Lamb, heav - en for - ev - er!  
 break - ing our bread, giv - ing us glo - ry:  
 heav - en to earth, Christ to the peo - ple,  
 Cher - u - bim sing: O grave, be o - pen!  
 riv - er of life, saints and arch - an - gels,



Oh, what a mir - a - cle God has in sight!  
 Je - sus our bless - ing, our con - stant sur - prise.  
 gift of the fu - ture now flow - ing to me.  
 Clothe us in won - der, a - dorn us in light.  
 sing with cre - a - tion to God the I AM!



*Refrain*  
 Je - sus is ris - en and we shall a - rise.



Give God the glo - ry! Al - le - lu - ia!

## Dismissal

Go in peace, to love and serve the Lord. **Thanks be to God!**

## Sending Music

“Christ lag in Todesbanden” by Dietrich Buxtehude

<b>Ministers:</b>	All Believers	<b>Musician:</b>	Anne Phillips
<b>Presiding Minister:</b>	Rev. Brenda Froisland	<b>Sacristy:</b>	Stephanie Johnson
<b>Assisting Minister:</b>	Anna Olsen	<b>Ushers:</b>	Norris Lovstuen and Jay Winger
<b>Lector:</b>	Don Olson	<b>Live Streaming:</b>	Gene Rodi and Ted Allison
<b>Cantor:</b>	Kristin Cleary	<b>Hospitality:</b>	Clarice Lovstuen
<b>Music Director:</b>	Bernie Asher	<b>Altar Guild:</b>	Laurie Hauge and Anna Wohnoutka

Reprinted by permission under Augsburg Fortress Liturgies Annual License #22165. Music reprinted by permission under OneLicense.net #A-704061 and CCLI #690921 & 20426074.

# PRAYER

## list...

### PRAY FOR BETHEL MEMBERS

Stella Warwick	Karen McBride
Christopher Rodi	Laurel Jorgensen
Bob Wandberg	Gloria Condon
Meredith LaCount	Hundt Family
Anna Olsen	Puckett Family
Dave and Libby Krogh	Darrell Dahl
Barb Saunders	Walker Family
Hoover Family	Cannon Family
Leonard Phillips	Warwick Family
David and Sue	Pikkarainen Family
Dorumsgaard Ayers	Gert Carlson
Joyce Hughes	

### MORE PEOPLE OF GOD

- People struggling with mental illness and their loved ones
- Victims of natural and human disasters
- People of Ukraine, Israeli Citizens, Iranian Citizens, and Palestinians in Gaza
- All of us regarding COVID, RSV, Flu, Mpox
- Black, Brown, Indigenous, and Asian Lives
- People without homes

### MEMBERS, RELATIVES AND FRIENDS IN THE SERVICE

Katrel Bishop (Pr B's nephew)  
Adam Froisland (Pr B's nephew)  
Evan Harrison (Pr B's great nephew)

### PRAY FOR OUR RELATIVES AND FRIENDS

Kris Hayes (Ann Allison's sister)  
Marvin (Bryan Mann-Entzel's father)  
Virginia (Jerry Johnson's mom)  
Bill (Barb Wandberg's brother)  
Lennon (Cole and Bryan's niece)  
Sonia (Gene Rodi's sister)  
Beth (Dan Hauge's sister)  
Vince and Carrie (Kelly Chilvers' friends)  
Andrea and Sage (Candy Hickenbotham's family)  
Ethylmae Ross (Gloria Condon's aunt)  
Ian (Pr B's friend)  
Eric (Pr B's and Mary's family friend)  
Julian (Jan Walker's friend)  
Kevin Johnson and family (Les' brother)  
Kristian (Pr B's friend)  
Steve (Pr B's brother)  
Michael (Marilyn Newborg's brother)  
Donovan (Angel Cannon's father)  
Rita (Sharon Phillips' friend)  
Calvin (Angel Cannon's godfather)  
Wayne (Karen Warwick's dad)  
Trent and Michelle (Norma's family)  
Darlene (Jeff Alberts' mom)  
Susan (Mike Condon's sister)  
John (Kathy Hundt's brother-in-law)

### BETHEL'S MISSION PARTNERS

- ◆ReconcilingWorks ◆Casa de Oracion - Pentecostal
- ◆Mpls Area Synod ◆Nokomis Healthy Seniors ◆CANMN
- ◆Iglesia Evangelica Luz Alas Naciones ◆Iglesia Evangelica La Voz de Dios
- ◆Bancroft Neighborhood Association ◆Bread of Life Deaf Lutheran Church (BOLD)