



In gratitude, Bethel Lutheran Church amplifies God's grace, nourishes all creation, reaches out, and builds community.

- We are a Reconciling in Christ Congregation.
- Why a Public Church? To impact and enhance the community so that everyone feels a sense of love and belonging.



SCOUT SUNDAY

FEBRUARY 1, 2026

Bethel Lutheran Church - In-person and Online
YouTube: @bethelmpls

SCOUT SUNDAY

February 1, 2026, 10:00AM

We welcome to the Lord's Table all people, without exception, who desire to receive the blessings of Christ's body and blood in this sacramental meal of bread and wine. If you are online, please prepare your own table with bread, wine, and/or a treat for anyone not receiving communion.

Boldface font indicates congregational response.

Worship leaders will indicate when to stand and sit, as you are able.

GATHERING

Gathering Music

"Strengthen for Service, Lord" by Anne Krentz Organ

Welcome and Announcements

(L) In the name of God the Cre · a · tor of the world In the name of Christ the
Son In the name of the Ho · ly Spir · it (c) A · men A · men

Confession and Forgiveness

We confess together, asking for God's participation in this time. **We are asking God to hold open the door again and again for us.**

Silence for reflection.

We sing:

I love you. I'm sorry. Please forgive me. Thank you.

God loves you too and thanks you. God forgives you. And you belong to God.

Amen.

Opening Hymn ACS 978

"God Welcomes All"

God wel - comes all, stran - ers and friends;

God's love is strong and it nev - er ends.

The image shows a musical score for the hymn "God Welcomes All". It consists of two systems of music, each with a treble and bass staff. The key signature is one sharp (F#). The first system contains the lyrics "God wel - comes all, stran - ers and friends;". The second system contains the lyrics "God's love is strong and it nev - er ends.". The music is written in a simple, accessible style with many whole and half notes.

Text: John L. Bell, b. 1949

Music: AMEN THEMBA, South African traditional; transc. and arr. John L. Bell.

Text and transcription © 2008 WGRG, Iona Community, admin. GIA Publications, Inc., giamusic.com. All rights reserved.

Prayer of the Day

Let us pray. Holy One, **help us all promote a culture where every youth, volunteer, and employee feels a sense of belonging and builds communities where every person feels respected and valued. Empower us to welcome families of all backgrounds to help prepare young people to serve as successful members and leaders of our nation's increasingly diverse communities. Amen.**

(Revised from the Mission of Scouting America)

Kyrie

(Refrain) x^h = hand clap (optional)

Glo-ry to God Glo-ry to God Glo-ry to God in the high-est
Glo-ry to God Glo-ry to God Peace to the peo-ple of the Lord (FINE)

Wor-thy is Christ the Pow-er Rich-es and Sing with all the Bless-ing and hon-or
Lamb who was slain whose blood set us free to be peo-ple of God
wis-dom and strength and hon-or and bless-ing and glo-ry are his
peo-ple of God and join in the hymn of all cre-a-tion
glo-ry and might be to God and the Lamb for - ev - er A-men (to refrain)

WORD

Scout Oath: On my honor I will do my best to do my duty to God and my country and to obey the Scout Law; to help other people at all times; to keep myself physically strong, mentally awake, and morally straight.

Scout Law: A Scout is trustworthy, loyal, helpful, friendly, courteous, kind, obedient, cheerful, thrifty, brave, clean, and reverent.

Children’s Message, then Sunday School

Children and the young at heart are invited to the front of the sanctuary.

Gospel Acclamation

Sing praise to the Lord Al-le-lu-ia Al-le-lu-ia Our thanks be to God
Sing praise to the Lord Al-le-lu-ia Al-le-lu-ia Thanks be to God

Gospel

Matthew 18:1-6, 10-11

The Gospel according to Matthew, the eighteenth chapter. **Glory to you, O Lord.**

At that time the disciples came to Jesus and asked, "Who is the greatest in the kingdom of heaven?" Jesus called a child, whom he put among them, and said, "Truly I tell you, unless you change and become like children, you will never enter the kingdom of heaven. Whoever becomes humble like this child is the greatest in the kingdom of heaven. Whoever welcomes one such child in my name welcomes me. If any of you put a stumbling-block before one of these little ones who believe in me, it would be better for you if a great millstone were fastened around your neck and you were drowned in the depth of the sea. "Take care that you do not despise one of these little ones; for, I tell you, in heaven their angels continually see the face of my Father in heaven, for the Son of Man came to save the lost"

The Gospel of the Lord. **Praise to you, O Christ.**

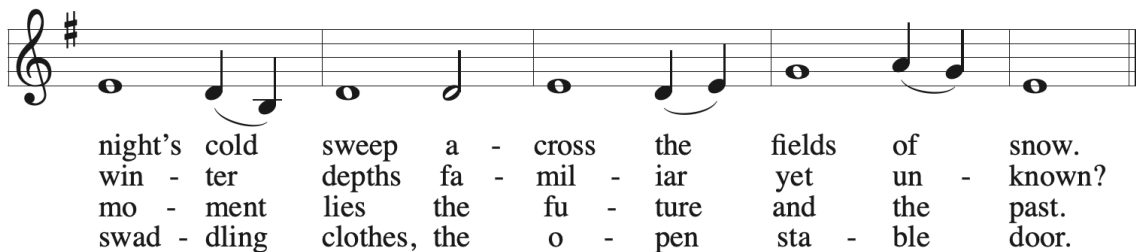
Sermon

Hymn of the Day LA 48

"Again We Find Our Way"

1 A - gain we find our way while stars like
2 What leads us to our this place so still and
3 Be - yond the vil - lage gate, a jour - ney's
4 The won - der of this night— with joy we

can - dles glow and flick - er in the
far from home, com - pels each step through
end at last while in this qui - et
find, once more, Em - man - u - el in



Text: Jeannette M. Lindholm
 Music: IDUMEA, A. Davisson, *Kentucky Harmony*, 1816
 Text © 2021 Jeannette M. Lindholm, admin. Augsburg Fortress

Prayer Updates

Prayers of the People

Trusting in God's extraordinary love, let us come near to the Creator in Prayer.

A brief silence.

Each petition ends with a response:

Spirit, intercede for us, **send wholeness to your creation.**

Receive the prayers of your children, merciful God, and hold us forever in your steadfast love; through Jesus Christ, our holy wisdom. **Amen.**

Peace

The peace of Jesus is with you always. **And also with you.**

Offering

For checks and cash offerings, please place them in the offering plate at the back of the sanctuary. For members, if you are making a cash donation, place it in an envelope with your name on it. For online giving through PayPal scan the QR code.

*Online worshipers, please send checks directly to:
 Bethel Lutheran, 4120 17th Ave S, Mpls, MN 55407
 Thank you for your generosity!*



Offering Prayer

Let us pray. Holy God, **you call us to believe and bear fruit. May the gifts that we offer here be signs of your abiding love. Form us to be witnesses in the world, through Jesus. Amen.**

MEAL

The Great Thanksgiving

Choral music for 'The Great Thanksgiving' in 2/4 time. The score consists of four systems, each with a vocal line and a piano accompaniment line. The vocal line includes lyrics and chord symbols (C, F/C, G, Am). The piano accompaniment line includes lyrics and chord symbols (C, F/C, G, Am). The lyrics are: (L) The Lord be with you (C) And with you, too; (L) Lift up your hearts, lift up your hearts (C) We lift them to the Lord; (L) Let us thank the Lord our God (C) It is right to give God thanks and praise; (L) The Lord be with you (L) And with you, too; (C) The Lord be with you (C) And with you, too.

(L) The Lord be with you (C) And with you, too

(L) Lift up your hearts, lift up your hearts (C) We lift them to the Lord

(L) Let us thank the Lord our God (C) It is right to give God thanks and praise

(L) The Lord be with you (L) And with you, too

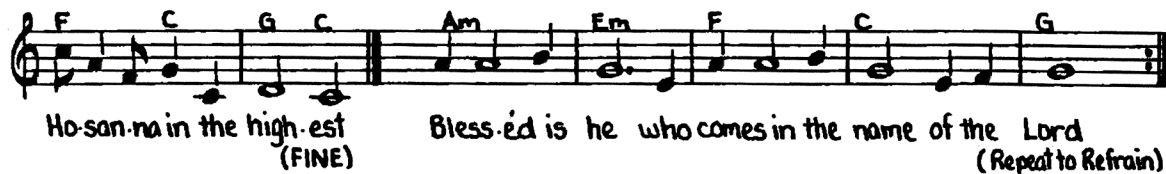
(C) The Lord be with you (C) And with you, too

Holy, Holy, Holy

Choral music for 'Holy, Holy, Holy' in 2/4 time. The score consists of a single system with a vocal line and a piano accompaniment line. The vocal line includes lyrics and chord symbols (C, F, G, Am). The piano accompaniment line includes lyrics and chord symbols (C, F, G, Am). The lyrics are: (Refrain) Ho-ly Ho-ly Ho-ly Lord God of power and love Heav'n and earth are full of you.

(Refrain)

Ho-ly Ho-ly Ho-ly Lord God of power and love Heav'n and earth are full of you



Words of Institution

For as often as we eat this bread and drink this cup, we proclaim the mystery of faith, that **Christ has died. Christ is risen. Christ will come again.**

Lord's Prayer

Gathered into one by the Holy Spirit, let us pray as Jesus taught us:

Our Father in heaven, hallowed be your name, your kingdom come, your will be done, on earth as in heaven. Give us today our daily bread. Forgive us our sins as we forgive those who sin against us. Save us from the time of trial and deliver us from evil. For the kingdom, the power, and the glory are yours, now and forever. Amen.

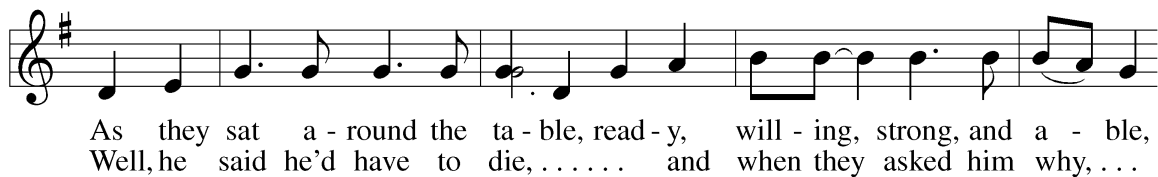
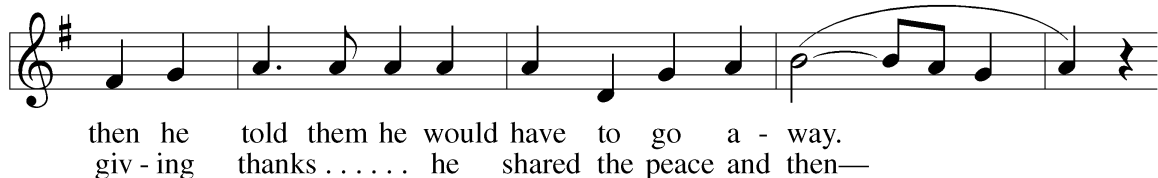
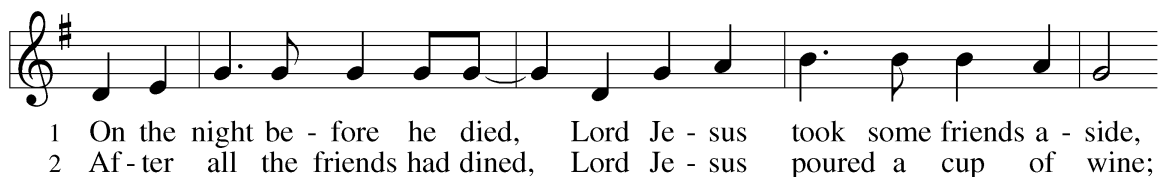
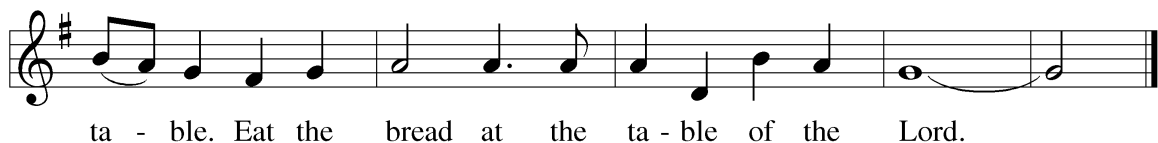
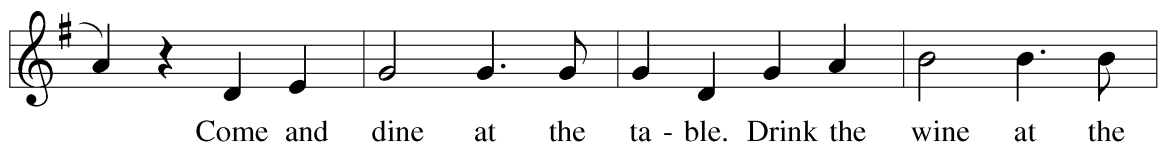
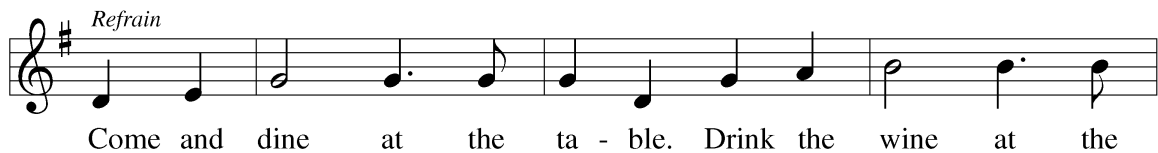
Invitation to Communion

Lamb of God Communion



Hymn DATH 28

"Come and Dine at the Table"



Refrain

Je - sus broke the bread and then was heard to say:
 Je - sus passed the cup and told them once a - gain:

Text: Ray Makeever
 Music: AT THE TABLE, Ray Makeever

Communion Hymn

"Lift My Eyes Unto Heaven Above"

$\text{♩} = 120$

1. I lift my eyes un - to heaven a - bove, and
2. How sweet to bless thee and praise thy name, for
3. A lit - tle flower in thy gar - den fair, my
4. Dear Lord, I thank thee for all thy love and

5. fold my hands to draw near thee; for
thou, O Christ, art my Sav - ior; Kind
life to thee has been giv - en; O
gifts di - vine be - yond mea - sure; a

9. thou, dear Lord, dost thy chil - dren love, _____ and
Shep - herd, guard me from sin and shame, _____ and
Sav - ior, keep me in thy dear care, _____ and
sweet - er song I will raise a - bove _____ to

Johan Ludvig Runeberg, 1804-1877
 tr. Ida Marie Kaskinen, 1903-1977
 paraphrased by Ernest Edwin Ryden, 1886-1981

Rudolf Lagi, 1823-1868
 arranged by Jonathan Rundman

Post Communion Blessing

The body and blood of our Lord Jesus Christ strengthens you in faith, holds you in God's grace, forgives your sins, and empowers you to love all others.

Amen.

Post Communion Prayer

Let us pray. Jesus our friend and savior, **your life, death, and resurrection** changed our world. May this meal of bread and wine bless us and sustain us in the building of a blessed community which welcomes all people, that sees all people, and that works for justice for all people. **Amen.**

SENDING

Benediction

With the help of our God, you are able to help other people at all times, keep yourself strong, be attentive to your needs and the needs of others, and live with honesty, integrity, and good character. **Amen.**

Sending Hymn TFF 217

"Bind Us Together"

Refrain

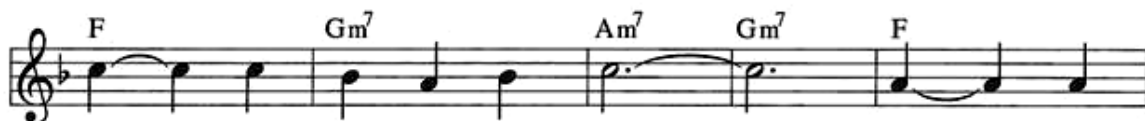
The musical notation is written on two staves in 3/4 time. The first staff contains five measures with notes and chords: F (first measure), Gm7 (second), Am7 (third), Dm7 (fourth), and Gm7 (fifth). The second staff contains seven measures: C7 (first), Bb/C (second), C7 (third), F (fourth), Gm7/C (fifth), F (sixth), and Gm7 (seventh). A slur connects the F and Gm7/C notes in the fifth measure. The lyrics are written below the notes.

Bind us to - geth - er, Lord, bind us to - geth - er with cords that

can - not be bro - ken. Bind us to - geth - er, Lord,



bind us to - geth - er, Lord, bind us to - geth - er in love.



1 There is on - ly one of God. There is
2 You are the fam - 'ly of God. You are the



on - ly one King. There is on - ly one Bod - y;
prom - ise di - vine. You are God's cho - sen de - sire, . . .



that is why we can sing:
you are the glo - rious new wine.

Text and music: Bob Gillman

Text and music © 1977 Kingsway's Thankyou Music, admin. EMI Christian Music Publishing

Dismissal

Go in peace to seek justice for all people. **Thanks be to God!**

Sending Music

“Guide Me Ever, Great Redeemer” by Valerie A. Floeter

Ministers:	All Believers	Musician:	Anne Phillips
Presiding Minister:	Rev. Brenda Froisland	Sacristy:	Stephanie Johnson
Assisting Minister:	Sharon Rodi	Ushers:	Norris Lovstuen
Lector:	Ann Allison	Live Streaming:	Gene Rodi and Ted Allison
Cantor:	Dean Anderson	Hospitality:	Romell White
Music Director:	Bernie Asher	Altar Guild:	Janet Anderson and Norma Lanning

Reprinted by permission under Augsburg Fortress Liturgies Annual License #22165. Music reprinted by permission under OneLicense.net #A-704061 and CCLI #690921 &20426074. Used by permission from Ray Makeever.

**BETHEL LUTHERAN CHURCH'S
2ND SATURDAY**

CONCERT SERIES

SEWARD CONCERT BAND

FEBRUARY 14, 2026, 3PM

Suggested \$10 Donation.

BETHEL LUTHERAN CHURCH

4120 17th Ave. S.

Minneapolis, MN | bethel-mpls.org

ALL ARE WELCOME

without exception!



Join us for our free
**COMMUNITY
FUN NIGHT**



BOARD GAME NIGHT



Thursday, February 12, 5:30pm-7:30pm

Free Meal at 5:30-6:15pm: Chili, Salad, and Cinnamon Rolls

Activity: Play a variety of Board Games with those in attendance



BETHEL LUTHERAN CHURCH | 4120 17th Ave. S., Minneapolis, MN | bethel-mpls.org

PRAYER

list...

PRAY FOR BETHEL MEMBERS

Barb Saunders	Karen McBride
Anna Wohnoutka	Laurel Jorgensen
The Family of Sharon Phillips	Gloria Condon
Alice Evenson	Hundt Family
Dave and Libby Krogh	Puckett Family
Hoover Family	Darrell Dahl
Leonard Phillips	Walker Family
David and Sue	Cannon Family
Dorumsgaard Ayers	Warwick Family
Joyce Hughes	Pikkarainen Family
Jerry Johnson	Gert Carlson

MORE PEOPLE OF GOD

- Renee Nicole Good and Alex Pretti's family, friends, and community members
- Victims of natural and human disasters
- People of Ukraine, Israeli Citizens, Iranian Citizens, and Palestinians in Gaza
- All of us regarding COVID, RSV, Flu, Mpox
- Black, Brown, Indigenous, and Asian Lives
- People without homes
- Refugees, Migrants and Asylum Seekers
- People affected by gun violence

MEMBERS, RELATIVES AND FRIENDS IN THE SERVICE

Katrel Bishop (Pr B's nephew)
Adam Froisland (Pr B's nephew)
Evan Harrison (Pr B's great nephew)

PRAY FOR OUR RELATIVES AND FRIENDS

Vince and Carrie (Kelly Chilvers friends)
Andrea and Sage (Candy Hickenbotham's family)
Ethylmae Ross (Gloria Condon's aunt)
The family of Nick (Ann Allison's nephew)
Ian (Pr B's friend)
Eric (Pr B's and Mary's family friend)
Julian (Jan Walker's friend)
Kevin Johnson and family (Les' brother)
Beth (Dan Hauge's sister)
Kristian (Pr B's friend)
Steve (Pr B's brother)
Michael (Marilyn Newborg's brother)
Donovan (Angel Cannon's father)
Rita (Sharon Phillips' friend)
Calvin (Angel Cannon's godfather)
Laura (Lisa Chovan Spence's sister)
Wayne (Karen Warwick's dad)
Trent and Michelle (Norma's Family)
Darlene (Jeff Alberts' mom)
Susan (Mike Condon's sister)
John (Kathy Hundt's brother-in-law)
Andrea (Mona Falk's daughter)

BETHEL'S MISSION PARTNERS

- ❖Bancroft Neighborhood Association ❖Bread of Life Deaf Lutheran Church (BOLD)
❖ReconcilingWorks ❖Casa de Oracion - Pentecostal
❖Mpls Area Synod ❖Nokomis Healthy Seniors ❖CANMN