



In gratitude, Bethel Lutheran Church amplifies God's grace, nourishes all creation, reaches out, and builds community.

- We are a Reconciling in Christ Congregation.
- Why a Public Church? To impact and enhance the community so that everyone feels a sense of love and belonging.



SIXTH SUNDAY OF PENTECOST

JULY 13, 2025

Bethel Lutheran Church - In-person and Online
YouTube: @bethelmpls

SIXTH SUNDAY OF PENTECOST

July 13, 2025, 10:00AM

We welcome to the Lord's Table all people, without exception, who desire to receive the blessings of Christ's body and blood in this sacramental meal of bread and wine. If you are online, please prepare your own table with bread, wine, and/or a treat for anyone not receiving communion.

Boldface font indicates congregational response.

Worship leaders will indicate when to stand and sit, as you are able.

GATHERING

Gathering Music

"Canticle of Grace" by Franklin Ashdown

Welcome and Announcements

Confession and Forgiveness

Baptized into Christ, **let us confess our sin.**

Silence is kept for reflection.

Merciful God, **you free us to love others, but we neglect our neighbors and follow our own way. You lead us by the Spirit of joy and peace, but we turn away from the abundant life you offer. You surround us with patience, kindness, and generosity, but we grow weary in doing what is right. In your mercy, forgive us. Do not give up on us. Heal us, break our bonds, and show us the path of life. Amen.**

You belong to Christ Jesus and you are God's children through faith. In the cross of Christ, and through the power of the Holy Spirit, your sins are forgiven. Clothed in love, you are a new creation. **Amen.**

Opening Hymn ELW 526

"God Is Here!"



1 God is here! As we your peo - ple meet to of - fer
2 Here are sym - bols to re - mind us of our life - long
3 Here our chil - dren find a wel - come in the Shep - herd's
4 Lord of all, of church and king - dom, in an age of



praise and prayer, may we find in full - er mea - sure
need of grace; here are ta - ble, font, and pul - pit;
flock and fold; here as bread and wine are tak - en,
change and doubt, keep us faith - ful to the gos - pel;



what it is in Christ we share. Here, as in the
here the cross has cen - tal place. Here in hon - es -
Christ sus - tains us as of old. Here the ser - vants
help us work your pur - pose out. Here, in this day's



world a - round us, all our var - ied skills and arts
ty of preach - ing, here in si - lence, as in speech,
of the Ser - vant seek in wor - ship to ex - plore
ded - i - ca - tion, all we have to give, re - ceive;



wait the com - ing of the Spir - it in - to o - pen minds and hearts.
here, in new - ness and re - new - al, God the Spir - it comes to each.
what it means in dai - ly liv - ing to be - lieve and to a - dore.
we, who can - not live with - out you, we a - dore you! We be - lieve!

Prayer of the Day

Let us pray. O Lord God, **your mercy delights us, and the world longs for your loving care. Hear the cries of everyone in need, and turn our hearts to love our neighbors with the love of your Son. Amen.**

Kyrie

Ky - ri - e e - lei - son. Lord, have mer - cy.

Chris - te e - lei - son. Christ, have mer - cy.

Ky - ri - e e - lei - son. Lord, have mer - cy.

WORD

Lesson

Children’s Message

Children and the young at heart are invited to the front of the sanctuary.

Gospel Acclamation

Al-le-lu - ia, al - le-lu - ia, al-le-lu - ia.

Gospel

Luke 10:25-37 (*Inclusive*)

The Gospel of the Lord continues according to Luke, the tenth chapter.

Glory to you, O Lord.

An expert on the Law stood up to put Jesus to the test and said, "Teacher, what must I do to inherit everlasting life?" Jesus answered, "What is written in the law? How do you read it?" The expert on the Law replied: "You must love the Most High God with all your heart, with all your soul, with all your strength and with all your mind, and your neighbor as yourself." Jesus said, "You have answered correctly. Do this and you'll live." But the expert on the Law, seeking self-justification, pressed Jesus further: "And just who is my neighbor?" Jesus replied, "There was a traveler going down from Jerusalem to Jericho, who fell prey to robbers. The traveler was beaten, stripped naked, and left half-dead. A priest happened to be going down the same road; the priest saw the traveler lying beside the road, but passed by on the other side. Likewise there was a Levite who came the same way; this one, too, saw the afflicted traveler and passed by on the other side. But a Samaritan, who was taking the same road, also came upon the traveler and, filled with compassion, approached the traveler and dressed the wounds, pouring on oil and wine. Then the Samaritan put the wounded person on a donkey, went straight to an inn and there took care of the injured one. The next day the Samaritan took out two silver pieces and gave them to the innkeeper with the request, 'Look after this person, and if there is any further expense, I'll repay you on the way back.' Which of these three, in your opinion, was the neighbor to the traveler who fell in with the robbers?" The answer came, "The one who showed compassion." Jesus replied, "Then go and do the same."

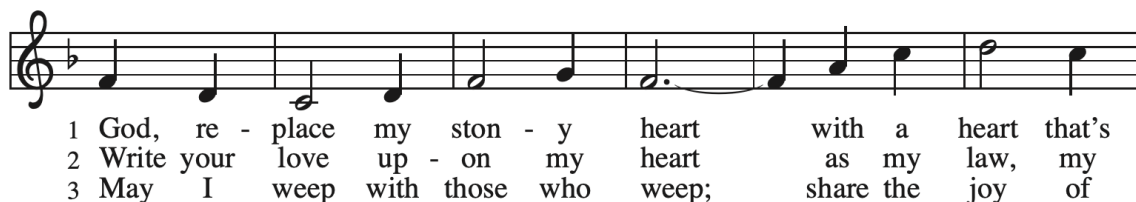
The Gospel of the Lord. **Praise to you, O Christ.**

Sermon

Hymn of the Day ACS 1043

"Spirit, Open My Heart"

Refrain



Refrain



Text: Ruth Duck, b. 1947

Music: WILD MOUNTAIN THYME, Irish melody; adapt. Alfred V. Fedak, b. 1953

Text © 1996 Pilgrim Press. All rights reserved.

Music © 2011 Alfred V. Fedak

Prayer Updates

Prayers of the People

In this moment, we open the doors of our lives to the call of our Creator, the God of all people, who invites us to become more than we can ask or imagine.

A brief silence.

Each petition ends with a response:

Lord, receive our prayer, **and in your love, answer.**

We lift these and all our prayers to you, O God, confident that you will turn to us and be gracious to us as you always do to those who love your name.

Amen.

Peace

The peace of Jesus is with you always. **And also with you.**

Offering

For checks and cash offerings, please place them in the offering plate at the back of the sanctuary. For members, if you are making a cash donation, place it in an envelope with your name on it. For online giving through PayPal scan the QR code.

*Online worshipers, please send checks directly to:
Bethel Lutheran 4120 17th Ave S, Mpls, MN 55407
Thank you for your generosity!*



Offering Prayer

Let us pray. Risen One, **you call us to believe and bear fruit. May the gifts that we offer here be signs of your abiding love. Form us to be witnesses in the world, through Jesus Christ, our true Savior. Amen.**

MEAL

The Great Thanksgiving

The Lord be with you.

Lift up your hearts.

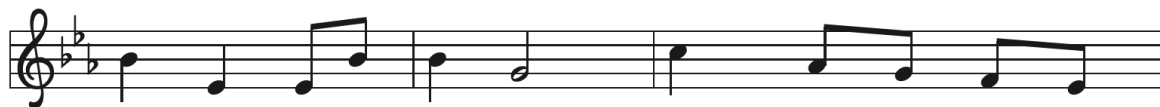
Let us give thanks to our God.

And also with you.

We lift them to God.

It is right to give God thanks and praise.

Holy, Holy, Holy



Ho - ly, ho - ly, ho - ly Lord, God of pow'r and



God of might, heav - en and earth are full of your



glo - ry. Ho - san - na in the high - est.



Bless - ed is the one who comes in the name of the



Lord. Ho - san - na, ho - san - na in the high - est.



Ho - san - na, ho - san - na in the high - est.

Words of Institution

For as often as we eat this bread and drink this cup, we proclaim the mystery of faith, that **Christ has died. Christ is risen. Christ will come again.**

Lord's Prayer

Gathered into one by the Holy Spirit, let us pray as Jesus taught us:

Our Father in heaven, hallowed be your name, your kingdom come, your will be done, on earth as in heaven. Give us today our daily bread. Forgive us our sins as we forgive those who sin against us. Save us from the time of trial and deliver us from evil. For the kingdom, the power, and the glory are yours, now and forever. Amen.

Invitation to Communion

Lamb of God



Lamb of God, you take a-way the sin of the world; have mer-cy on



us. Lamb of God, you take a-way the sin of the world; have



mer-cy on us. Lamb of God, you take a-way the sin of the



world; grant us peace, grant us peace.

Communion Hymn ELW 496

"One Bread, One Body"

Refrain



One bread, one bod-y, one Lord of all; one cup of



bless-ing which we bless, and we, though man-y



through-out the earth, we are one bod - y in this one Lord.



1	Gen - tile	or Jew,	ser - vant	or free,
2	Man - y	the gifts,	man - y	the works,
3	Grain for	the fields,	scat-tered	and grown,

Refrain



wom - an	or man,	no	more.
one in	the Lord	of	all.
gath - ered	to one	for	all.

Text: John Foley, SJ, b. 1939

Music: ONE BREAD, ONE BODY, John Foley, SJ

Text and music © 1978 John B. Foley, SJ and OCP Publications, 5536 NE Hassalo, Portland, OR 97213. All rights reserved. Used by permission.

Communion Hymn ELW 472

"Eat This Bread"

Refrain

"Eat this bread, drink this cup, come to me and nev - er be hun - gry.
OR Je - sus Christ, bread of life, those who come to you will not hun - ger.

Eat this bread, drink this cup, trust in me and you will not thirst."
Je - sus Christ, ris - en Lord, those who trust in you will not thirst.

Text: Taizé Community

Music: BERTHIER, Jacques Berthier, 1923–1994

Text and music © 1984 Les Presses de Taizé, GIA Publications, Inc., agent, 7404 S. Mason Ave., Chicago, IL 60638, www.giamusic.com.
800.442.3358. All rights reserved. Used by permission.

Post Communion Blessing

The body and blood of our Lord Jesus Christ strengthens you in faith, holds you in God's grace, forgives your sins, and empowers you to love all others.

Amen.

Post Communion Prayer

Let us pray. Living One, **in this feast you have made yourself known to us. Send us now to tell of your wonders, sing of your glory, and proclaim your risen life to a wounded and weary world. Please continue to support our homebound members, as well as our communion visitors who share this meal so freely. Amen.**

SENDING

Benediction

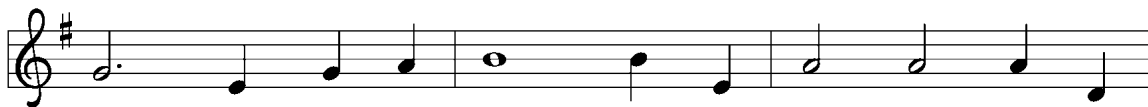
The love of God abounds in you; the grace of our Savior Jesus Christ fills your hearts; and the life of the Spirit blesses you and gives you peace. **Amen.**

Sending Hymn ELW 696

"Jesus Calls Us; o'er the Tumult"



1 Je - sus calls us; o'er the tu - mult of our
2 As of old Saint An - drew heard it by the
3 Je - sus calls us from the wor - ship of the
4 In our joys and in our sor - rows, days of
5 Je - sus calls us! By your mer - cy, Sav - ior,



life's wild, rest - less sea, day by day his clear voice
Gal - i - le - an lake, turned from home and toil and
vain world's gold - en store, from each i - dol that would
toil and hours of ease, still he calls, in cares and
may we hear your call, give our hearts to your o -



sound - ing, say - ing, "Chris - tian, fol - low me;"
kin - dred, leav - ing all for Je - sus' sake.
keep us, say - ing, "Chris - tian, love me more."
plea - sures, "Chris - tian, love me more than these."
be - dience, serve and love you best of all.

Text: Cecil Frances Alexander, 1818–1895

Music: GALILEE, William H. Jude, 1851–1922

Dismissal

Go in peace, to love and serve the Lord. **Thanks be to God!**

Sending Music

“O God, Our Help in Ages Past” by Michael Burkhardt

Ministers:	All Believers	Musician:	Miriam Jensen
Presiding Minister:	Rev. Brenda Froisland	Sacristy:	Marilyn Newborg
Assisting Minister:	Sharon Rodi	Ushers:	Dean Anderson and Dave Sunde
Lector:	Libby Krogh	Live Streaming:	Gene Rodi and Ted Allison
Cantor:	Dean Anderson	Hospitality:	Romell White
Music Director:	Bernie Asher	Altar Guild:	Sharon Rodi and Joyce Hughes

Reprinted by permission under Augsburg Fortress Liturgies Annual License #22165. Music reprinted by permission under OneLicense.net #A-704061 and CCLI #690921 &20426074.

BETHEL LUTHERAN CHURCH'S

TALK
SESSIONS

bethel-mpls.org/talksessions

Bethel invites you to our weekly Talk Sessions. This is a time for people to come together and voice their thoughts, ideas, and emotions. It is a time to listen to others' concerns, frustrations, and excitements regarding different aspects of their lives. This is an informal gathering that focuses on communication and conversation. Please join us for these drop-in events.



MONDAYS 6-8 PM

In the Parlor starting June 30, 2025

BETHEL LUTHERAN CHURCH
4120 17TH AVE S
MPLS, MN 55407



BETHEL LUTHERAN CHURCH

Scholarship APPLICATIONS

Bethel wants to encourage and support those who are seeking higher education.

Applications for the 2025-2026 school year are due on August 5, 2025.

Applications can be found on our website: bethel-mpls.org/education

Applicants must be entering their second year of post-high-school study.

For more information on our scholarship program or to apply,
please contact the office:

612-724-3693 or bethel@bethel-mpls.org

Apply Now!



POP-UP HAND CHIMES CHOIR

SUNDAY, JULY 20

- *No experience needed.*
- *One rehearsal before worship on Sunday, July 20 at 9:15am.*
- *Drop in or tell Bernie you're coming beforehand!*
- *All are welcome to join in the fun!*

BETHEL LUTHERAN CHURCH'S
2ND SATURDAY

Concert Series

MARKETING

Donate now to help us generate funds so we can market our 2nd Saturday Concert series to new individuals. Bethel receives every penny of your donation. Help us reach our goal of \$1500!

DONATE NOW

<https://thrivent.cotribute.co/events/1157607/detail>



PRAYER

list...

PRAY FOR BETHEL MEMBERS

Dave and Libby Krogh	Karen McBride
Hoover Family	Laurel Jorgensen
Leonard and Sharon Phillips	Kevin Hoover
David and Sue	Gloria Condon
Dorumsgaard Ayers	Hundt Family
Joyce Hughes	Puckett Family
Jerry Johnson	Darrell Dahl
Darlene Olson	Walker Family
Gert Carlson	Cannon Family
Jan Walker	Warwick Family
Larissa Hoover	Pikkarainen Family

MORE PEOPLE OF GOD

- Victims of natural and human disasters
- People of Ukraine, Israeli Citizens, Iranian Citizens, and Palestinians in Gaza
- All of us regarding COVID, RSV, Flu, Mpox
- Black, Brown, Indigenous, and Asian Lives
- People without homes
- Refugees, Migrants and Asylum Seekers
- People dying due to gun violence

MEMBERS, RELATIVES AND FRIENDS IN THE SERVICE

Katrel Bishop (Pr B's nephew)
Adam Froisland (Pr B's nephew)
Evan Harrison (Pr B's great nephew)

PRAY FOR OUR RELATIVES AND FRIENDS

Teresa (Susan and Jerry's friend)
Julian (Jan Walker's friend)
Kevin Johnson and family (Les' brother)
Beth (Dan Hauge's sister)
Kristian (Pr B's friend)
Kathy (Krogh Family friend)
Steve (Pr B's brother)
Michael (Marilyn Newborg's brother)
Donovan (Angel Cannon's father)
Ian (Pr B's friend)
Laura (Sue Dorumsgaard Ayers' friend)
Rita (Sharon Phillips' friend)
Calvin (Angel Cannon's godfather)
Laura (Lisa Chovan Spence's sister)
Wayne (Karen Warwick's dad)
Trent and Michelle (Norma's Family)
Darlene (Jeff Alberts' mom)
Susan (Mike Condon's sister)
John (Kathy Hundt's brother-in-law)
Andrea (Mona Falk's daughter)

BETHEL'S MISSION PARTNERS

- ❖Bancroft Neighborhood Association ❖Bread of Life Deaf Lutheran Church (BOLD)
❖ReconcilingWorks ❖Casa de Oracion - Pentecostal
❖Mpls Area Synod ❖Nokomis Healthy Seniors ❖CANMN