



# Herald

BETHEL LUTHERAN CHURCH

Volume 88

Number 8

August 2024

## PASTOR'S PONDERINGS

### FOLLOW UP

**I** was reviewing some of the Herald articles I have written lately, and some of them made me wonder a few things. I wonder

*... how people are feeling about the retreat we had in April.*

*... if folks know enough about what the Feasibility Study Team is doing these days.*

*... what thoughts and feelings are dominating your head and heart about Bethel.*

*... if people are feeling like our communication efforts from the office are enough.*

*...if many people actually read the Herald on a regular basis.*

*... what you really think of your pastor who has now been here for 12 years.*

Inquiring minds would like to understand the truths connected to all those areas of wonder. So, in May, I wrote an article asking some of you to host an event at your home for Bethel folks to have an open and honest conversation about these very things.

### Here is part of the article:

*"I wonder if all of us, at Bethel, are experiencing similar emotions as we look*

*ahead to our future. I know the fear is real for many of us. Fear of the unknown, change, and if we will make the right decisions, seem to stare us in the face regularly. Yet, there may also be some excitement, anticipation, and wonder as we take the next best steps for Bethel.*

*"... I would love to spend time with as many of you as possible as we discern what comes next. **Would you be willing to host a small group meeting at your home? Invite members who live closest to you, and invite me too?***

*"... I would love for us to get together and talk through our emotions, concerns, and fears of the future of our faith community; if for no other reason than to get things off our chest and out in the open. Will you host a small group event? Let me know and we will get you a list of folks to invite."*

I did not hear from anyone willing to host an event this summer. I am still wondering. So consider this a personal request: **Would you be willing to host a small group meeting at your home? Invite members who live closest to you, and invite me too?** [Please do not make me have to ask the very same question in person. Frankly, that particular age-old expectation at Bethel is exhausting for me and our staff. I am not angry about it, but pretty exhausted.]

*Continued on page 2*

If you are willing to host an event, Bethel is happy to pay for the food and beverages needed. And our staff will help invite folks to your home. It is our hope to invite everyone on our membership list to at least two of these events, so everyone can choose, and be able, to attend. **Please let us know if you can host an event sometime in September - November, by Thursday, August 15. Feel free to email us, call us, or write us a note.**



With you, for Jesus,

*Pastor Brenda*

Pastor Brenda  
[pastor@bethel-mpls.org](mailto:pastor@bethel-mpls.org)



# Welcome, New Members!



*Cassandra, Jason, Freddie & Harry*

NEW MEMBERS



*John, Molly, Louise, & Phoebe*

NEW MEMBERS



*Allie*

NEW MEMBER



# *Bethel is* **NOW COLLECTING SCHOOL SUPPLIES**

Education is one of the strongest tools a community can use to break the cycle of poverty. Children, especially girls, and some adults benefit from these kits. Currently, thirty-one backpacks are sewn. More are being made. With stores featuring sales on school supplies, now is a good time to purchase them.

## SCHOOL SUPPLIES TO FILL THE BACKPACKS ARE:

- 70 sheet notebooks of wide-ruled paper
- 30-centimeter ruler
- Pencil sharpener
- Blunt scissors
- Unsharpened #2 pencils with erasers
- Box of 16 or 24 crayons
- 2 ½-inch eraser
- Blue or black stick ballpoint pens (no gel ink)



Items with any religious or military symbols, flags, group emblems and names cannot be accepted.

Contact Sharon Rodi for more information: [nord@minter.net](mailto:nord@minter.net)



## **Help Sew School Bags**

**Are you interested in sewing school bags for  
Lutheran World Relief (LWR) distribution?**

**The filled school bags enable children to attend school prepared.**

**Contact Sharon Rodi for sewing instructions:**

**612-722-3324 or [nord@minter.net](mailto:nord@minter.net)**

**How many bags can we sew and fill in 2024?**

# BETHEL'S

# rally

# sunday

SEPTEMBER 8, 2024

JOIN US FOR WORSHIP AT 10AM  
OR AFTER FOR:

- **FREE PICNIC**
- **YARD GAMES**
- **SERVICE PROJECT**

Help us put together school bags  
filled with school supplies for  
Lutheran World Relief to distribute.

This event is **FREE** and open to the public.  
**ALL ARE WELCOME!**



**BETHEL LUTHERAN CHURCH**  
4120 17th Ave. S., Minneapolis, MN  
[bethel-mpls.org](http://bethel-mpls.org) | 612-724-3693

# FEASIBILITY UPDATE

At our most recent meeting we spent time organizing the work we have already done into categories that will help us focus on what our committee should do next.

Those categories include:

- Those we've contacted who have said they aren't interested in a partnership with us at this time
- Those we've contacted who have not responded to our calls or emails
- Those we are still connected with and are possibilities for partnerships
- New ideas to explore
- Ideas we've explored that may not be a good fit for us
- Questions we have that need to be answered before potential partnerships can be explored further
- Ideas we are referring to the Board of Administrators or the Mission Council to work on.

Most of us have now read the book Gone for Good, which we mentioned in last month's article. Authors of the book



strongly recommend that we survey our neighbors to see what their needs are and how potential changes at Bethel would impact them. We are likely going to hire a company that specializes in this type of work to do the survey.

As always, please get in touch with one of our committee members or email us at [feasibility@bethel-mpls.org](mailto:feasibility@bethel-mpls.org) if you have questions or ideas for us.

Committee members:

*Jim Lair, Laurie Hauge, Don Olson, Ann Allison, Andrea Allie, Gene Rodi, and Pastor Brenda (ex-officio)*

## BETHEL LUTHERAN CHURCH'S **rally** **sunday** **HANDBELL & VOCAL CHOIRS**

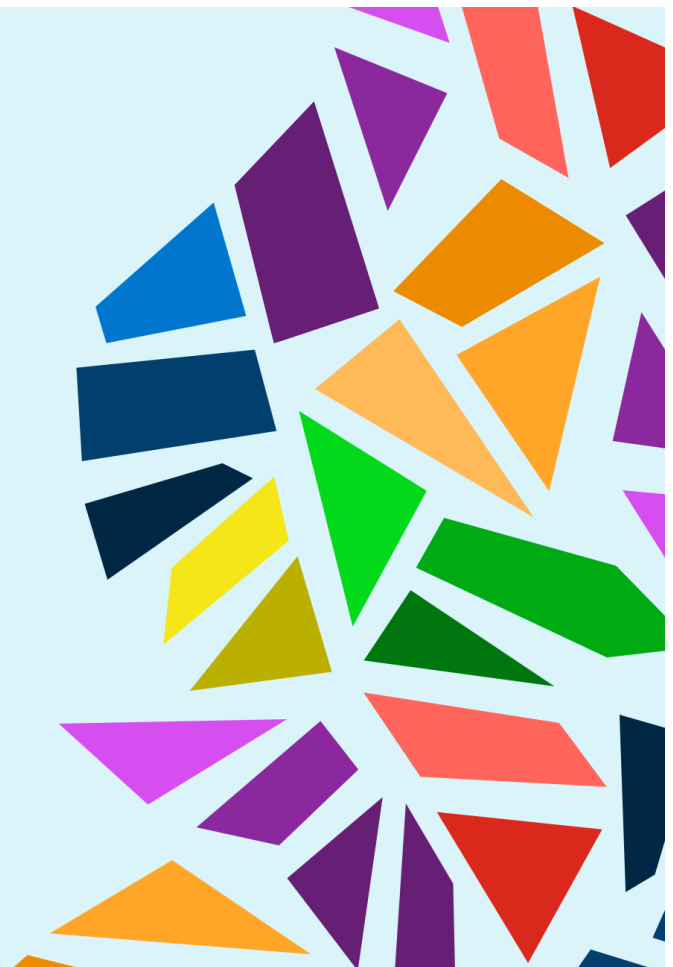
**ALL ARE WELCOME TO JOIN IN THIS COMMUNITY CHOIR  
NO EXPERIENCE NECESSARY!**

**REHEARSALS:**  
**WED. AUG 28 AND SEPT. 4, 2024**  
**BELL CHOIR @ 5:45PM**  
**VOCAL CHOIR @ 7:00PM**

**PERFORMANCE IN WORSHIP:**  
**SUN. SEPT. 8 @10AM**

**FOR MORE INFORMATION OR TO BE ADDED TO THE LIST OF  
SINGERS AND RINGERS, PLEASE EMAIL BERNIE:**  
[music2023@bethel-mpls.org](mailto:music2023@bethel-mpls.org)

**BETHEL LUTHERAN CHURCH**  
4120 17th Ave. S., Minneapolis, MN | [bethel-mpls.org](http://bethel-mpls.org) | 612-724-3693



# MINISTRY CALENDAR

Sunday	Monday	Tuesday	Wednesday
28 <b>NO WORSHIP AT BETHEL--ONLINE ONLY</b> 1:00pm Pentecostal Casa Event 1:00pm Pentecostal Casa Worship 5:30pm Minneapolis Jo	29 Bethel Office Closed 8:00am Camp Breakaway Check-in 12:00pm CANMN Distribution 7:00pm Bridge to Shore AA	30 9:00am OA HOW Meeting 10:00am NHS Exercise 10:00am Staff Meeting 11:00am NHS 500 Cards Group 6:30pm Scout Troop 7:00pm Pentecostal Casa Music	31 9:15am Ensemble Music Class 10:00am NHS Women's Art Group 10:00am NHS Yoga 12:00pm Hybrid Bible Study 6:30pm Continuous Action A
4 10:00am Bethel Worship 11:00am Fellowship Time 1:00pm Pentecostal Casa Worship 5:30pm Minneapolis Jo	5 Bethel Office Closed 12:00pm CANMN Distribution 7:00pm Bridge to Shore AA	6 9:00am OA HOW Meeting 10:00am NHS Exercise 10:00am Staff Meeting 11:00am NHS 500 Cards Group 6:30pm Scout Troop 7:00pm Pentecostal Casa Music	7 9:15am Ensemble Music Class 10:00am NHS Women's Art Group 10:00am NHS Yoga 12:00pm Hybrid Bible Study 6:30pm Continuous Action A 6:30pm Nokomis Quilters
11 10:00am Bethel Worship 11:00am Fellowship Time 1:00pm Pentecostal Casa Worship 5:30pm Minneapolis Jo 7:00pm A Holy Experiment	12 Bethel Office Closed 12:00pm CANMN Distribution 4:00pm Feasibility Study Team 5:00pm MN Voting Setup 7:00pm Bridge to Shore AA 8:00pm Bridge to Shore AA Board Mtg	13 MN Voting 9:00am OA HOW Meeting 10:00am NHS Exercise 10:00am Staff Meeting 11:00am NHS 500 Cards Group 6:30pm Mission Council 6:30pm Scout Troop 	14 9:15am Ensemble Music Class 10:00am NHS Women's Art Group 10:00am NHS Yoga 12:00pm Hybrid Bible Study 6:30pm Continuous Action A
18 10:00am Bethel Worship 11:00am Fellowship Time 1:00pm Pentecostal Casa Worship 5:30pm Minneapolis Jo 11:00pm AWC Bus Pick-up	19 Bethel Office Closed South Minneapolis Day Camp at Diamond Lake - Pr B there 12:00pm CANMN Distribution 7:00pm Bridge to Shore AA  <b>Herald Deadline 12:00pm</b>	20 South Minneapolis Day Camp at Diamond Lake - Pr B there 2:00am AWC Bus Drop-off 9:00am OA HOW Meeting 10:00am NHS Exercise 10:00am Staff Meeting 11:00am NHS 500 Cards Group 6:30pm Scout Troop 7:00pm Pentecostal Casa Music	21 South Minneapolis Day Camp at Diamond Lake - Pr B there 9:15am Ensemble Music Class 10:00am NHS Women's Art Group 10:00am NHS Yoga 11:00am Voting Site Visit 12:00pm Hybrid Bible Study 6:30pm Continuous Action A 7:30pm Continuous Action Le
25 10:00am Bethel Worship 11:00am Fellowship Time 1:00pm Pentecostal Casa Worship 5:30pm Minneapolis Jo	26 Bethel Office Closed 12:00pm CANMN Distribution 4:00pm Feasibility Study Team 7:00pm Bridge to Shore AA	27 9:00am OA HOW Meeting 10:00am NHS Exercise 10:00am Staff Meeting 11:00am NHS 500 Cards Group 6:30pm Scout Troop 7:00pm Pentecostal Casa Music	28 10:00am NHS Women's Art Group 10:00am NHS Yoga 12:00pm Hybrid Bible Study 6:30pm Continuous Action A

# JULY - AUGUST 2024

Monday	Thursday	Friday	Saturday
s group  A	1 9:00am NHS Foot Care 9:30am NHS Nurse Is In/Blood Pressure 10:00am NHS Exercise 11:00am NHS Roundtable Discussions 3:00pm CANMN Distribution 7:00pm BNA Board Meeting	2 11:30am Camp Breakaway Check - Out 6:00pm Pentecostal Casa Worship	3 9:00am AA Amigos 10:45am Paw & Order 11:00am CANMN Distribution
s group  A	8 9:30am NHS Nurse Is In/Blood Pressure 10:00am NHS Exercise 11:15am NHS Lunch and Movie 3:00pm CANMN Distribution	9 6:00pm Pentecostal Casa Worship	10 9:00am AA Amigos 10:45am Paw & Order 11:00am CANMN Distribution
s group  A	15 9:30am NHS Nurse Is In/Blood Pressure 10:00am NHS Exercise 11:00am Diabetes Support Group 11:00am NHS Let's talk About Loss 3:00pm CANMN Distribution	16 6:00pm Pentecostal Casa Worship	17 9:00am AA Amigos 10:45am Paw & Order 11:00am CANMN Distribution
o at Diamond Lake - s group  A eadership Meeting	22 South Minneapolis Day Camp at Diamond Lake - Pr B there 9:30am NHS Nurse Is In/Blood Pressure 10:00am NHS Exercise 11:00am NHS Caregiver Support Group 3:00pm CANMN Distribution	23 South Minneapolis Day Camp at Diamond Lake - Pr B there 6:00pm Pentecostal Casa Worship	24 9:00am AA Amigos 10:45am Paw & Order 11:00am CANMN Distribution 12:00pm Family Gathering
group  A	29 9:30am NHS Nurse Is In/Blood Pressure 10:00am NHS Exercise 3:00pm CANMN Distribution	30 6:00pm Pentecostal Casa Worship	31 9:00am AA Amigos 11:00am CANMN Distribution

# BIBLE STUDY WITH PR BRENDA

*Wednesdays at 12pm*

Online meeting room:  
<https://us02web.zoom.us/j/81542792093>



And in-person in the Fireside Room.

8/7	King Solomon 1 Kings 4:29-33
8/14	Sheep and Shepherds John 10:2-10
8/21	Rhoda Acts 12:11-16
8/28	Queens Viashti and Esther Esther 1:10-12 and 4:10-16

## CHURCH STAFF AND LEADERSHIP

### Rev. Brenda Froisland, Pastor:

[pastor@bethel-mpls.org](mailto:pastor@bethel-mpls.org)

### Music:

Bernie Asher, Music Director

[music2023@bethel-mpls.org](mailto:music2023@bethel-mpls.org)

Anne Phillips, Musician

[musician2023@bethel-mpls.org](mailto:musician2023@bethel-mpls.org)

### Office Manager:

Regan Saunders

[bethel@bethel-mpls.org](mailto:bethel@bethel-mpls.org)

### Finance Coordinator:

Teresa Klotz

[assttreas@bethel-mpls.org](mailto:assttreas@bethel-mpls.org)

### Facilities Manager:

Rachel Allison

[headcustodian@bethel-mpls.org](mailto:headcustodian@bethel-mpls.org)

### Assistant Custodians:

Kristian Ask, Michael Hauge,

Bill Shy, Katie Simons

### Grant Manager:

Rev. Michelle Lewis

[grantmanager@bethel-mpls.org](mailto:grantmanager@bethel-mpls.org)

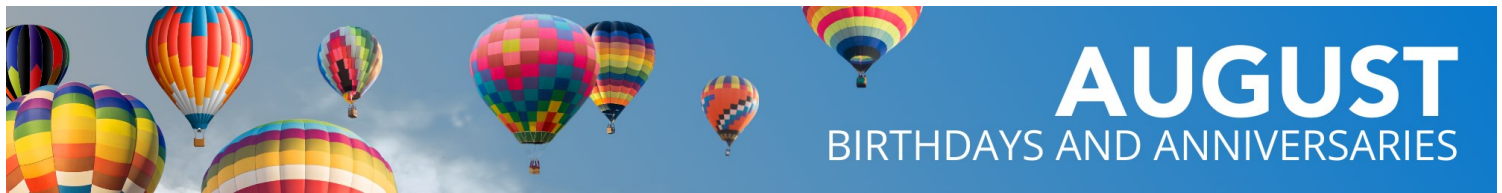
For a full list of our  
staff and leadership  
members, please  
visit our website:



## SUNDAY SERVERS

Date	Assisting Minister	Lector	Cantor	Sacristy	Ushers	Streaming	Hospitality	Altar Guild
8/4	Sharon Rodi	Laurie Hauge	Sarah Berke	Stephanie Johnson	Tom	Gene and Ted	Laurie Hauge	Barb and Barb
8/11	Ann Allison	Ann Allison	Bernie Asher	Marilyn Newborg	Dean and Dave S	Gene and Ted	Sharon Rodi	Barb and Barb
8/18	Anna Olsen	Kristin Cleary	Dean Anderson	Clarice Lovstuen	Susan and Jerry	Gene and Ted	Joan Bargman	Barb and Barb
8/25	Susan Johnson	Darlene Olson	Janet Anderson	Marilyn Newborg	Dave K and Norris	Gene and Ted	Alice Evenson	Barb and Barb





# AUGUST

## BIRTHDAYS AND ANNIVERSARIES

### Birthdays

Harold Cross	2
Malakai Keating	5
Matt Psick	6
Matthew Nordine	7
Hunter Maddaus	8
Dan Hauge	10
Regan Saunders	10
Irene Berke	14
Gavin Chovan-Spence	17
Frank Phillips	19
Troy Ramerth	20
Kathy Hundt	24
Jan Walker	24
Cassandra Herrmann	27
Norma Lanning	28
Megan Psick	30

### Anniversaries

Mike and Grace Simons	8
Dan and Kathy Hundt	10
Ryan and Emily Kjesbo-Johnson	15
Bob and Barb Wandberg	23
Gail and Doug Hanson	26
Bev Berg and Mike Riley	29

*If your birthday or anniversary is missing or incorrect, please let the office know so we can update our records! Thank you!*



**Do you want a copy of the Herald mailed to you every month?**

If so, please contact the office today.  
We will add you to the mailing list!

bethel@bethel-mpls.org  
612-734-3693

## FOLLOW US



# PRAYER list...

## PRAY FOR BETHEL MEMBERS

The Family of Marge Hauge	Karen McBride
Tom Keating	Sharon Phillips
Libby Krogh	Gert Carlson
Warwick Family	Laurel Jorgensen
Pikkarainen Family	Kevin Hoover
Larissa Hoover	Gloria Condon
Sue Dorumsgaard Ayers	Hundt Family
Mike and Grace Simons	Teondre Martinez
Cannon Family	Puckett Family
The Walker Family	Andy Martinson
Lynn Vaughn-Arradondo	Doris Christianson
	Darrell Dahl
	Crystal Vaughn's Family

## MORE PEOPLE OF GOD

- Victims of natural and human disasters
- People of Ukraine, Israeli Citizens, and Palestinians in Gaza
- All of us regarding COVID-19, RSV, Flu, Mpox
- Black, Brown, Indigenous, and Asian Lives
- People without homes
- Refugees, Migrants and Asylum Seekers
- People dying due to gun violence

## PRAY FOR OUR RELATIVES AND

Kathy (Krogh Family friend)  
Judy (Sue Dorumsgaard Ayers' step-mom)  
Steve (Pr B's brother)  
Michael (Marilyn Newborg's brother)  
Laura (AnnE's sister)  
Angela (Tom and AnnE's granddaughter)  
Donovan (Angel Cannon's father)  
Ian (Pr B's friend)  
Laura (Sue Dorumsgaard Ayers' friend)  
Rita (Sharon Phillip's friend)  
Calvin (Angel Cannon's godfather)  
Sandie (Anna Wohnoutka's aunt)  
Kristian (Pr B's friend)  
Laura (Lisa Chovan Spence's sister)  
Wayne (Karen Warwick's dad)  
Trent and Michelle (Norma's Family)  
Darlene (Jeff Alberts' mom)  
Susan (Mike Condon's sister)  
John (Kathy Hundt's brother-in-law)  
Andrea (Mona Falk's daughter)

## MEMBERS, RELATIVES AND FRIENDS IN THE SERVICE

Alec M. Cullen (Tom Keating's nephew)  
Katrel Bishop (Pr B's nephew)  
Adam Froisland (Pr B's nephew)  
Dwana Froisland (Pr B's niece)  
Sean Young (Pr B's godson)  
Evan Harrison (Pr B's great nephew)

## BETHEL'S MISSION PARTNERS

❖Bancroft Neighborhood Association ❖Bread of Life Deaf Lutheran Church (BOLD)  
❖ReconcilingWorks ❖Casa de Oracion - Pentecostal  
❖Mpls Area Synod ❖Nokomis Healthy Seniors ❖CANMN

For additions or revisions to the Prayer List, please contact  
Pastor Brenda: [pastor@bethel-mpls.org](mailto:pastor@bethel-mpls.org)  
or the Office: [bethel@bethel-mpls.org](mailto:bethel@bethel-mpls.org)  
(612) 724-3693

# STEWARDSHIP UPDATE

For this year's Stewardship campaign we'll be using some resources from Sanctified Art, which has been used at worship services over the past few years. The first part of the campaign is "Remember." A few prompts for reflection: Remember a time in your life that felt like receiving manna – perhaps this was an unexpected financial gift, nourishing time spent with those you love, or a beautiful meal shared with family or friends. What did it feel like to receive this? How do manna moments like this impact your faith and your stewardship practices?

Do you ever think of taking communion as receiving manna? Jesus took bread and wine, divided it up and gave some to everyone - to be fed, to remember Him, to share that which is God's in the first place. I was looking through the bulletin for our 125th anniversary worship service, and found some food for thought in the hymns and prayers we used that day.

"Let us go now to the banquet, to the feast of the universe. The table's set and a place is waiting; come, everyone, with your gifts to share."

"We thank you, God, that for many years you have made your saving presence known among us in the sacrament, and that month after month, year after year, you have constantly forgiven our sins and assured us of life and salvation through it."

"Faith endures by holding on, keeping memory's roots alive, so that hope may bear its fruit, promise-fed, our souls will thrive."

Thanks for reading!

*Kristin Cleary*

# MISSION COUNCIL REPORT

In May, we thanked departing chairperson Janet Anderson for her four years of service to the committee, two of those as chairperson. Her tenure was during a time of national and local events that had a profound impact on the Bethel community, and we are grateful for her leadership during these times.

We welcomed new members Susan Johnson (myself) and Andrea Allie. As the incoming chairperson, I am looking forward to a busy and productive year! Bethel is partnering with the Bancroft Neighborhood Association for the BNA Annual Ice Cream Social on Thursday, July 25, at 6PM. We will be hosting a Wacky Olympics for the littles in what promises to be a fun time for all. Games will include water balloon shotput, noodle javelin throw, gunny sack races, ribbon dancing, and an obstacle course. Fantastic candy "medals" will be awarded! Family Camp starts the next day, ending on Sunday the 28th.

In June, we discussed the School Supply collection in August and connecting this with Rally Sunday on September 8. We discussed involving the wider community in both events. Also on the table is a potential new visitation person position, and the Queer, Sober, Safe Space (QSSS) project.

Pastor Bryan of St. Peder is considering holding pre-election conversations around faith and spirituality, to which members of Bethel would be invited to attend. There is a new Little Free Library by the picnic tables. We discussed a live birdsong feed on our webpage and the prayer box and how well it is working. We discussed tree identification signs on our property, updates on the Loneliness Project, and other projects. We have a lot to look forward to as the Holy Spirit prompts us to embrace the new in the upcoming year!

*Susan Johnson*



# Herald

BETHEL LUTHERAN CHURCH

4120 17th Ave. S., Minneapolis, MN  
bethel-mpls.org | 612-724-3693

In gratitude, Bethel Lutheran Church amplifies God's grace, nourishes all creation, reaches out, and builds community.

- We are a Reconciling in Christ Congregation.
- Why a Public Church? To impact and enhance the community so that everyone feels a sense of love and belonging.

## HELP US *Spread the Word* ABOUT BETHEL

### GRAB A YARD SIGN!

*Next time you're at Bethel, grab a yard sign or flyer to display at your residence or at your favorite business. Help us spread the word about Bethel and our welcoming, inclusive nature. Want a sign in your yard but can't make it to Bethel? Message the office and we'll see what we can do!*

### HELP US HANG POSTERS!

*Are you available to hang a few posters in your neighborhood at places you already frequent? How about businesses around Bethel? This is one effort we are making to bring awareness to our congregation, our building, and everything else we have to offer to people looking for a sense of community. Please contact the office if you can commit to hanging a few flyers. Thank you!*

