



In gratitude, Bethel Lutheran Church amplifies God's grace, nourishes all creation, reaches out, and builds community.

- We are a Reconciling in Christ Congregation.
- Bethel Children, Youth & Family Ministry bridges generations to model, equip, and encourage a foundation of trust in God's story.

BETHEL HERALD

Volume 84

Number 7

July 2020



Pastor's Column.....	1-2
Holy Trinity Letter.....	3
Speak Up.....	3
Dr. J's Column.....	4
Phil's Music Score.....	5
Live as Stewards.....	5
School Supplies Needed.....	5
July Calendar.....	6-7
Birthdays & Anniversaries.....	8
Communion at Home.....	8
Water Wednesdays.....	9
Book Club: "Dear Church".....	9
Jammies & Jesus.....	9
Prayer List.....	10
Board of Administrators.....	11
Mission Council.....	11
Upcoming Movies.....	12



Greetings, Dear Ones,

I am writing today to keep you informed of all that is happening at Bethel in response to so many things happening around us. Please note that I would like your feedback on these things and am open to discussion. Also know that there are some wonderful people on a task force who are working hard to learn how to respond to COVID-19 and the use of our building.

Is the building open or closed?

At the printing of this newsletter the building is still closed with a few exceptions. As usual, Bethel, BNA, and NHS have access to their offices. The newest addition to this exception is that Casa Minnesota and Casa Pentecostal are worshipping in our space. They have very strict guidelines that must be followed as they use the space and are encouraged to do everything possible to keep their members as safe as possible, as well as our building as clean as possible. These two congregations asked to meet again because although they were doing online worship, several of their members did not have access to their worship. Several more than our own congregation.

Does this mean Bethel can now worship together?

I am sorry, but no. Our synod Bishop continues to remind us that we must follow the scientific guidelines and keep our people as safe as possible. For example, wait until there have been 14 days in a row with cases in our state/county decreasing. On the day I am writing this article, we have had four days in a row in Minnesota, however, this data may be incomplete because it is so new.

The difference between our congregation and our friends who are with our Casa congregations is threefold: we love to sing together (not recommended at all), we share Holy Communion (germ sharing), and we are, in general, an older congregation and have more people who are much more vulnerable to the virus.

Here is where I need your feedback. Who would come to worship inside the sanctuary IF we offered this option? For those of you who would come to worship, would you do it because you feel safe or because you would feel obligated? Who would prefer to continue to see worship online? Who plans not to come back at all until this virus has a vaccine? Please call me at 651.270.4960 or email me at pastor@bethel-mpls.org as soon as you read this!

continues

Also, I know some of you are not taking Holy Communion at home, and desire to have Holy Communion. I am very willing to come to you and offer Holy Communion in a “no contact” manner. That is, we would meet outside your home, be masked, and I would set up communion and then offer it from a safe distance. Please call or email me if you would like to set up an appointment.

Speaking of outdoor Holy Communion, what about outdoor worship?

The task force has been discussing this possibility both on chairs in the back yard or drive-in worship. We are in search of affordable equipment that would both allow for the safety of those who attend, as well as make it accessible online to those who would not attend. We have found a product that would make drive-in worship possible (cost is \$500). We have not yet figured out how we continue to offer a quality product that is LIVE and online ... unless it is what we do now and people at home watch while people at Bethel attend the drive-in service (twice the work for your staff team). However, we are still not sure if we should sing together when gathered outside. And, let's be honest now, for those of you who would come to outside worship, would you actually keep the appropriate physical distance from the friends you love and miss so very much? And how do we keep the kids happy?

As you can see, there are many questions the task force is working on. We have already done the “easy” part of putting together strict guidelines for when people do come to the building. However, we feel a deep obligation to make decisions that will keep all of our membership and friends as safe as possible from this deadly global pandemic. As I said last month, I would rather stay away from all of you and worship online than get together to worship in person and then have several funerals.

PLEASE give me your feedback! It is important to me and the task force!

What about all the other groups that use Bethel to meet?

At this point, these groups seem to be doing OK meeting online. The BSA Scouts have returned to meet outside, using social distancing, and not using the building. Otherwise, no one has asked to come back to Bethel. However, IF a group does, the task force is preparing strict guidelines and outdoor space for these groups. The Tuesday Crew has put up one tent, and we have ordered a second tent to be put up. This way, people can meet outside, where things are a bit safer.

Having said this, if you would like to meet with a small group of friends while physically distancing and following our strict guidelines, please let us know. We are taking reservations for tent use outside the building.

What are we doing about racial justice?

Our Racial Justice Initiative continues and grows as we respond to the tragedies and angst of our community. It is true that we need to support our black and brown siblings in the fight for equal rights and protections. It is also true that those of us who are white need to educate ourselves and learn how we subconsciously participate in our society that is greatly biased in favor of white people. Please participate in our movie nights, discussions, studies, book groups and the like to help change happen for the better of our entire community.

How is our Little Free Pantry coming along?

I have to say, this is one of the best split-second decisions I have made. There are many, many people getting fed and contributing to our Little Free Pantry that was started the week after we closed our building. At this point we have about 60-70 cans of food left from the BSA Scouts doing a food drive about a month ago. There are still several neighbors and members contributing to the pantry. And we do not see the need going down at all. So, if you are going shopping, and are able, please feel free to pick up some things to contribute to feeding our neighborhood. The items that seem to go quickly and we are low on right now include pasta and sauce, tortillas, breakfast foods, bags of white rice, bags of dried beans, and boxes of mac and cheese.

What else do you have questions about?

Please let me know, and I will be glad to answer them through our emails and over the phone. Stay safe and keep loving one another from a distance!

God's peace and love surrounds each and everyone of you, always!
With you, for Jesus,

Pastor Brenda

A letter from Holy Trinity Lutheran Church

“When I was hungry, you fed me.”

Hi all, We could use your help!

As many of you know, we've been serving thousands of people since the murder of George Floyd and the fires that followed. We are currently distributing food and basic necessities on MWF. It's a lot; it's also what we're called to do right now.

The news cycle has shifted, which means that some of our individual donations have slowed. We'd like to engage churches, work places, organizations, block parties, book clubs... in larger scale donation efforts. To make it easy on folks to know exactly how much we need of particular items, we've created a spreadsheet. (You can sign up to bring 1,000 rolls of toilet paper, for instance, for a particular day of our distribution.) We'll continue to take individual donations, as well, but we hope this new model helps us to stabilize our donation efforts over the next weeks and months.

I'd encourage you to think big (and think faster than you might be accustomed to). Take on a piece of the pie that seems beyond your capacities and then organize, organize, organize your people. The Strib reported this morning that we're headed toward Great Depression food shortages. We're already seeing this trend in Longfellow. We will only make it through the next few months of service if churches like yours help us to live into God's abundance.

Here's the donation sign-up form:

https://docs.google.com/spreadsheets/d/1PXaNt7169GwZxT3FC5xud_J2n9YLo6UaIKGimcAM5VQ/edit?usp=sharing

For ongoing volunteer needs and emerging asks, please check in on our Facebook page:

<https://www.facebook.com/htlcmpls/>

I'm so grateful to be in ministry with all of you. Thanks for the care and compassion that you've already extended to us during this difficult time. We thank you in advance for the ways that you'll continue to show up to support our corner of the city in the weeks and months to come.

Strength for the journey, Ingrid

Pastor Ingrid C. A. Rasmussen (she/her/hers) Holy Trinity Lutheran Church

If you would like to coordinate a particular day of donations please let Pr Brenda know.

Make Your Opinions Known to Elected Officials

The MN legislature was meeting in special session. (Hopefully the governor will call another special session.) It is always important you make your opinions known to your legislators in support of legislative action to address the many issues which have become apparent in the last month.

This can be done with a couple of sentences. You do not have to be specific; just state you expect action. Legislators need to know their constituents expect action. If you don't know what district you live in or the names of your legislators, go to this website: gis.leg.mn When it opens, click on "Who represents me?" You simply write in your address and you will get your answers and a way to contact your legislator. It couldn't be easier.

submitted by Darlene Olson



From the desk of Dr. Jen Kilps, Engagement Coordinator

TIMES SUCH AS THESE...

These are extra-ordinary times. We find ourselves in the midst of much needed social upheaval and, concurrently, a pandemic. We are trying to make sense out of rioting, cries from voices long silenced and ugly truths about our lives. All this while fearing exposure to a virus out of control. We are uncertain of what the future may hold regarding so many aspects of our lives.

These are extraordinary times, maybe, in terms of the particular circumstances— but unprecedented, no. We have always lived in uncertain times. Death and fear and deep, rife injustice are woven into the fabrics of our lives. It is an illusion that somehow we are in control of what might happen next, that we are the masters of our fate. We, as societies and individuals, tell ourselves stories, myths and histories about who we are, what we deserve in this life and how things will turn out.

Now, perhaps more than any other time in our lives, we are being called to “come to Jesus”— to become truth tellers, to self examine, to call out injustice, to repent and to pray for deliverance.

Now, more than any other time in our lives are we being tested— our mettle, our resolve, our faith. We are confronted with our perceived knowledge of who we are and how we participate in the human experience.

Now, more than ever, we are looking for truth. At least I am, I shouldn't presume. But with abject humility I am looking for God's truth right now. I feel like I am crying out in the wilderness. I am looking for justice and for comfort and a promise that everything will be alright.

Over the past months I have found myself coming back, time and again, to the following words in 1 Corinthians 13:12. **“For now we see in a mirror, dimly, but then we will see face to face. Now I know only in part; then I will know fully, even as I have been fully known.”**

Paul's words remind me that implicit in our very humanity— our knowledge is limited, our perceptions imperfect. We may cry, and rend our clothes, asking **HOW** do we make sense of **NOW** as Christians.

Maybe these particular words of Paul have become a fixture in my thoughts as they complete what might be the truest words in scripture, and the most beautiful:

If I speak in the tongues of mortals and of angels, but do not have love, I am a noisy gong or a clanging cymbal. And if I have prophetic powers, and understand all mysteries and all knowledge, and if I have all faith, so as to remove mountains, but do not have love, I am nothing. If I give away all my possessions, and if I hand over my body so that I may boast, but do not have love, I gain nothing.

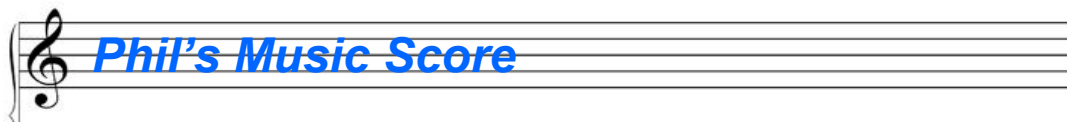
Love is patient; love is kind; love is not envious or boastful or arrogant or rude. It does not insist on its own way; it is not irritable or resentful; it does not rejoice in wrongdoing, but rejoices in the truth. It bears all things, believes all things, hopes all things, endures all things.

Love never ends. —1 Cor 13: 1-8a

I can really say nothing more.

Do you know who has something to say? (well, sadly, had) The inspired teller-of-truths, the fabulous, Ms. Nina Simone. She's got it! <https://www.youtube.com/watch?v=inNBpizpZkE>

Pax,
Dr. Jen



Favorite Hymns of Bethel Project

Amid the seemingly never-ending chaos of the past few months it is sometimes hard to find comfort through familiarity. New “normals” are the way of life. But then I had an idea. I seem to be getting lots of ideas lately – not sure if it’s the countless hours at the organ or piano bench or a little too much sun from weeding gardens. I want to spend the next couple months compiling a current list of favorite hymns of Bethel.

A list of favorite hymns and songs that are sung in worship will help in planning services, but I also plan to put together a virtual hymn festival. This will include arrangements that bring the text alive, ways that make you want to sing along! All you need to do is send me an email with your favorite hymn or two. Bonus: Send me the reason why you chose that hymn, what meaning resonates with you or does it have for you. Remember that it could be a seasonal hymn like a Christmas or Easter hymn too.

Your favorite hymn(s):

What makes it/them your favorite?

Send responses to organist@bethel-mpls.org

Or, jot me a note and send it to: 4120 17th ASve S Mpls. MN 55417

Thank you,

Phil Radtke,
Music Director



SCHOOL KITS

Backpacks are being sewn. Contact Sharon Rodi for fabric and sewing instructions. Sewing instructions are also available at the Lutheran World Relief website.

SCHOOL SUPPLIES NEEDED TO FILL THE BACKPACKS ARE:

- ◆ 70 sheet, wide-ruled notebooks
- ◆ 30-centimeter wood ruler
- ◆ Pencil sharpener
- ◆ Blunt scissors
- ◆ Unsharpened pencils with erasers
- ◆ Box of 16 or 24 crayons
- ◆ 2 ½ inch eraser
- ◆ Blue or black stick ballpoint pens, no gel ink



NOTE: Items with any religious, military, flags, group emblems and names will not be accepted. With school supply sale prices, August is an excellent time to purchase items.



JULY

Sunday	Monday	Tuesday	Wednesday
<p style="color: red; text-align: center;">Info on Pr B being gone for a bit</p> <p>Although Pr Brenda is not going on sabbatical this summer, she is taking a vacation this month. She and Mary will be going on a road trip out west, July 8-17. Dr Jen & Pr Anita Hill (651-707-6408) are on call for everyone and will share worship leadership.</p>			1
5 10:30 AM Virtual Bethel Worship 11:30 AM Virtual Fellowship Time https://us02web.zoom.us/j/85032958485 1:00 PM Pentecostal Casa Worship 1:30 PM MN Casa Worship	6	7 9:30 AM Virtual Coffee group https://zoom.us/j/640304895 10:30 AM Virtual Staff Meeting 12:30 PM Text Study Virtual 6:30 PM Virtual Mental Health Small Group https://us02web.zoom.us/j/89301705170 7:00 PM Pentecostal Casa Music Practice	8 9:00 AM Wa Day Camp Co
12 10:30 AM Virtual Bethel Worship 11:30 AM Virtual Fellowship Time https://us02web.zoom.us/j/85032958485 11:30 AM Welcome Committee 1:00 PM Pentecostal Casa Worship Production 1:30 PM MN Casa Worship	13 7:30 PM Jammies & Jesus https://us02web.zoom.us/j/81317392976	14 9:30 AM Virtual Coffee group https://zoom.us/j/640304895 10:30 AM Virtual Staff Meeting 12:30 PM Text Study Virtual 6:30 PM Virtual Mission Council 7:00 PM Pentecostal Casa Music Practice	15 9:00 AM Wa Day Camp Co
19 10:30 AM Virtual Bethel Worship 11:30 AM Virtual Fellowship Time https://us02web.zoom.us/j/85032958485 11:30 AM Virtual CYF Meeting 1:00 PM Pentecostal Casa Worship Production 1:30 PM MN Casa Worship	20 7:30 PM Jammies & Jesus https://us02web.zoom.us/j/81317392976	21 9:30 AM Virtual Coffee group https://zoom.us/j/640304895 10:30 AM Virtual Staff Meeting 12:30 PM Text Study Virtual 6:45 PM Board of Administrators 7:00 PM Pentecostal Casa Music Practice	22 9:00 AM Wa Day Camp Co TODAY is ALL to be inc AUGUS
26 10:30 AM Virtual Bethel Worship 11:30 AM Virtual Fellowship Time https://us02web.zoom.us/j/85032958485 12:30 PM Book Group: DEAR CHURCH https://us02web.zoom.us/j/84215189177 1:00 PM Pentecostal Casa Worship Production 1:30 PM MN Casa Worship	27 7:30 PM Jammies & Jesus https://us02web.zoom.us/j/81317392976	28 9:30 AM Virtual Coffee group https://zoom.us/j/640304895 10:30 AM Virtual Staff Meeting 12:30 PM Text Study Virtual 7:00 PM Pentecostal Casa Music Practice	29 9:00 AM Wa Day Camp Co

2020



Wednesday	Thursday	Friday	Saturday
	2 9:30 AM Virtual Coffee group https://zoom.us/j/640304895 4:00 PM Virtual Youth Talk 6:00 PM MN Casa	3 6:00 PM Pentecostal Worship	4
After Wednesdays continues	9 9:30 AM Virtual Coffee group https://zoom.us/j/640304895 4:00 PM Virtual Youth Talk 6:00 PM MN Casa	10 6:00 PM Pentecostal Worship 7:00 PM Bethel Movie Night SELMA 9:00 PM Movie Discussion	11 4:40 PM Happy Hour Parents of Elementary and younger Kids https://us02web.zoom.us/j/85867388126 7:00 PM Happy Hour Jr and Sr High parents and youth https://us02web.zoom.us/j/83955370607
After Wednesdays continues	16 9:30 AM Virtual Coffee group https://zoom.us/j/640304895 4:00 PM Virtual Youth Talk 6:00 PM MN Casa	17 6:00 PM Pentecostal Worship	18 7:00 PM Happy Hour Bethel Peeps https://us02web.zoom.us/j/87570368563
After Wednesdays continues the DEADLINE for ITEMS cluded in the T HERALD.	23 9:30 AM Virtual Coffee group https://zoom.us/j/640304895 4:00 PM Virtual Youth Talk 6:00 PM MN Casa	24 6:00 PM Pentecostal Worship 6:30 PM Bethel Movie Night JUST MERCY 9:00 PM Movie Discussion	25
After Wednesdays continues	30 9:30 AM Virtual Coffee group https://zoom.us/j/640304895 4:00 PM Virtual Youth Talk 6:00 PM MN Casa	31 6:00 PM Pentecostal Worship	

*If your birthday or anniversary
is missing from this page,
please let the office know so
we can update our records!*



Jill Engle	3
Margaret Johnson	3
Michelle Kevelin	4
Marilyn Bergin	7
Marshall Fossum	7
Bruce Gramentz	8
Sam Hoover	8
Douglas Contoski	11
Craig Stenzel	11
Shirley Elavsky	13
Maverick Smedstad	13
Ann Allison	15
Jayson Spence	15
Mary Thone	15

Cole Mann-Entzel	16
Romell White	16
Alice Evenson	19
Sharon Phillips	23
Jill Hult	24
Alice Johansson	25
Barb Saunders	25
Randy Neuman	26
Colby Simons McDaniel	28
Ella Soderberg	29
Kay Newborg	30
Teddy Gaines	31

Jill & Myron Engle	3
Jill & David Hult	12
Mike & Gloria Condon	12
Les & Becky Johnson	13
Sue & David Dorumsgaard Ayers	31



Pr Brenda is going on the road with Holy Communion

Holy Communion at your home?!

Pr Brenda is happy to come to your home to offer Holy Communion in person. Simply email or call her to set up an appointment. She will meet you outside your home, be masked, set up communion, and then serve it from a distance. Hopefully there will be a little visit included!

651.270.4960. pastor@bethel-mpls.org

Water Wednesdays - an extension of Day Camp Water Is Life

Kids, Youth and Parents, LISTEN UP!

We had so much fun with Day Camp in June that we are extending the fun! Starting July 8, we will offer Water Wednesday Day Camp every Wednesday through the month of August!

So join us online at 9 AM on Wednesday mornings for singing, a message, ASL lesson, and more! Then spend the day working on crafts, being a water steward, and more! Thank you for everyone who joined us in June.

You can join now too ... and begin now or even catch up to what we did by going to this website! <https://sites.google.com/view/southminneapolisdaycamp2020/home>

There are so many things to do, you might be busy all summer!
Zoom link, coming soon!

Our next Book Club

Dear Church: A Love Letter from a Black Pastor to the Whitest Denomination in the United States by Pr Lenny Duncan

Sunday, July 26 at 12:30 PM on Zoom

Lenny Duncan is an unlikely pastor. Formerly incarcerated, he is now a black preacher in the whitest denomination in the United States: the Evangelical Lutheran Church in America. Shifting demographics and shrinking congregations make the headlines, but Duncan connects the church's lack of diversity to its lack of vitality. Part manifesto, part confession, and all love letter, *Dear Church* offers a bold new vision for the future of the church.

<https://us02web.zoom.us/j/84215189177>

Or call 312. 626.6799 Meeting ID: 842 1518 9177

This physical book is NOT stocked at Amazon at this time, only the audio book. It is available on christianbooks.com



Please join us in July as we try something new:

Jammies & Jesus!

Each of three **Mondays (July 13, 20, 27)** we will read and discuss a bedtime Bible story and send your child off to bed with a prayer!

Our first one will be on **Monday, July 13th, at 7:30pm**. This story time was designed with preschool and younger elementary-aged students in mind, and as always, all are welcome!

Please use the following Zoom information to join and we'll see you on the 13th! <https://us02web.zoom.us/j/81317392976>

Sincerely, Wendy Krogh, CYF Committee





Pray for us all.

PRAYERS FOR OUR MEMBERS

Mark & Jan Walker	Bresina Family
Gloria Condon	Karen McBride
Mike Simons	Ryan Summer
Pikkarainen Family	Elaine Vogel
Warwick Family	Teondre Martinez
Paige Best	Crystal Vaughn
Trudy (Gert) Carlson	Lynn Vaughn
Angel Cantu	Jim Haraldson
Larissa Hoover	Sue Dorumsgaard
Shirley Elavsky	Ayers
Marjorie Hauge	Audrey Campbell
Dave & Libby Krogh	Jeff Fossum
Hundt Family	Mel Olson
Marilyn Romsaas	Joan Dahlman
Tom Keating	Puckett Family
Sharon Warwick	Teddy Gaines
Marshall Fossum	Andy Martinson
Sheila Nelson	Doris Christianson

MEMBERS, RELATIVES & FRIENDS IN THE SERVICE

Robert Hundt
 Katre Bishop (Pr Brenda's nephew)
 Adam Froisland (Pr Brenda's nephew)
 Dwana Froisland (Pr Brenda's niece)
 Brian Hansen (Kaka Day's husband)
 Aaron Larson (Rosie Smith's grandson)
 Sean Young (Pr Brenda's godson)

RELATIVES & FRIENDS

Black and Brown Lives
 People of Minneapolis and St Paul
 Medical Workers, Essential Workers
 Government Leaders, Supply Drivers
 Migrants & Asylum seekers
 Susan & Dale (Wendy Ledesma's parents)
 Marcella Nelson (Anna Olsen's mom)
 Sue & Wayne (Karen Warwick's parents)
 Bill & Peg (Mary Chilvers' dad & his wife)
 Gretchen (Larissa Hoover's mom)
 Lydia (Laurie & Dan Hauge's granddaughter)
 Kristian (Pr B's bestie)
 Sam Cheaney (Sheila Nelson's friend)
 Rhonda (Sheila Nelson's friend)
 Kevin (Sheila Nelson's friend)
 Joni (Sheila Nelson's cousin)
 Rosy Fieker (Libby Krogh's sister)
 Rev. Ron Schuette (Dave's father)
 Steve Elavsky (Shirley Elavsky's son)
 Sue (Mary Rosby's cousin)
 Denann Karels (Jan & Mark Walker's friend)
 Joanne Wilberg (Marjorie Hauge's sister)
 Keith Shaubach (Jan Walker's brother)
 Jean Phillips (Chris Phillips' mom)
 Pamela Christi (Sharon Phillips' sister)
 Gabe Ness (Julie Hundt's husband)
 John Hundt (Kathy Hundt's brother-in-law)
 Paula Morgan (Romell White's sister)
 Cheryl (Karen McBride's sister)
 Ann Baskett (Crystal Vaughn's grandmother)
 Claire Tarr (Margaret Johnson's godchild)
 Meghan (Sue Dorumsgaard Ayers' friend)
 Andrea (Mona Falk's daughter)

Our Mission Partners

- ❖ Bancroft Neighborhood Association
- ❖ Bread of Life Deaf Lutheran Church BOLD ❖ Casa de Oracion - MN
- ❖ Casa de Oracion - Pentecostal ❖ Mpls Area Synod ❖ Nokomis Healthy Seniors
- ❖ ReconcilingWorks ❖ Sheridan Story

Board of Administrators

We have a great task force that has been meeting to determine how to open our building and what that will look like. As you know, we share our building with many other churches and groups and, of course, they want to be able to be in the building. The task force is thoughtfully thinking of all that needs to happen - how and when.

The roof has been repaired and the solar garden is back in place. We are waiting for it to be connected.

The tree planting has been delayed by a stipulation of the grant we received. Watch for new trees in September.

Even though Pastor Brenda cannot do the "going away" part of her sabbatical this year, our congregation will be starting the work we promised to do. We will be taking part in the Intercultural Development Inventory. This will be starting soon and you will be contacted about doing this over the next several months.

I hope you are enjoying our beautiful summer weather and long, summer days.

God's blessings and peace to you all.

Ann Allison, Chair

Mission Council

The Mission Council is continuing to meet regularly over Zoom. We are getting pretty used to seeing each other that way, but miss seeing each other in person. And seeing all of you.

We want to thank those folks who participated in the Bethel Victory Garden project. It was great to see people in person and to do our part to make our community a little greener. I want to thank Norma Lanning, Anna Olsen, and Jim Lair for doing most of the grunt work.

One of the Council's next big focuses is on our Natural Playground project. We are brainstorming ideas and forming a Mission Council design team. We also hope to work with and have the help of a local Scouts who will use the project toward becoming an Eagle Scout.

Finally, we have also been focusing on our Racial Justice Initiative. We decided to take advantage of this time when people might be out and about less and are increasing our film screening and discussion opportunities. We added a second film viewing in June and are planning two more in July. We had a small group but a very good discussion after our viewing of "Cesar Chavez" earlier in June. We would love to see more folks participating. Please join us! We are also getting closer to our roll out of the Intercultural Development Inventory (IDI), which Dr. Jen is now certified to administer. Watch for opportunities to take the inventory in the months ahead.

-Stephanie Johnson, Mission Council Chair

Bethel Lutheran Church

4120 17th Avenue South

Minneapolis, MN 55407

www.bethel-mpls.org

General e-mail:

bethel@bethel-mpls.org

Phone: (612) 724-3693

Fax: (612) 724-3694

Office Hours vary due to COVID-19

Pastor: Brenda Froisland

pastor@bethel-mpls.org

651-270-4960

Engagement Coordinator:

Dr. Jen Kilps

engage@bethel-mpls.org

321-750-7862

Music:

Phil Radtke, Director

organist@bethel-mpls.org

Barb Saunders, Erin Gaines

Office Administrator:

Susie George

bethel@bethel-mpls.org

Finance Coordinator

Eleni Andre

asstreas@bethel-mpls.org

Head Custodian:

Jim Blomgren

Assistant Custodians:

Chris Hoover, Bill Shy,

Katie Simons

Board of Administrators:

Ann Allison, President

Dean Anderson, At-Large

Pat Gramentz, Treasurer

Laurie Hauge, Vice-President

Les Johnson, At-Large

Bryan Mann-Entzel, Secretary

Mission Council:

Janet Anderson

Larissa Hoover

Stephanie Johnson, Chair

Lizzy Kile

Jim Lair

Anna Olsen

Visitation Committee:

Sharon Rodi, Coordinator

C Y & F Committee:

Kristin Cleary

Lisa Chovan-Spence

Michael Hall

Tom Keating

Wendy Krogh

Katie Simons

Anna Wahnoutka, Chair

AUGUST Deadline:

Approved Article, Advertisement and
Calendar deadline is:

WEDNESDAY

July 22 at 12:00 Noon

BETHEL HERALD

*In gratitude, Bethel Lutheran Church
amplifies God's grace, nourishes all creation, reaches out, and builds community.
We are a Reconciling in Christ Congregation*

